

Chelsea Schools Open With 26 New Teachers on Faculty

It's back to school time for Chelsea school children. Going back to school is fun, at least for a while. New clothes, new shoes on one's feet, and the familiar smell that is special to a school always seem more exciting the first few days.

Part of the excitement about going back to school is to meet the new teachers. Here is a brief description of the new faces seen in Chelsea's schools this year.

In the high school, there are 10 new teachers.

Dennis Andariese will be teaching graphic arts, and power mechanics for Chelsea, this year. Dennis is a graduate of Kearney State College, Kearney, Neb. He taught last year at Wentzville, Mo.

William Bainton, a 1970 graduate of Michigan State Univer-

sity, will teach mathematics. He will also be freshman football coach, and assistant track coach.

On the English scene will be Nancy Corcoran. Mrs. Corcoran is a graduate of Montclair State College, Montclair, N. J. She taught previously at Sussex, N.J.

Janice Newhouse will also teach English. She has a BA and an MA from the University of Michigan.

Fredrick Elmore, a 1970 graduate of Michigan State University, is new to the history department.

Charles Kelley, who has a BS and an MS from Western Michigan University, will be teaching chemistry and physics. He is also the new head basketball coach. Kelly has taught and coached for eight years.

The past six he spent at Adrian, at Madison High school.

Elaine Klatt, graduate of Western Michigan University, will be teaching home economics.

Nancy Oswald, new special education teacher at Chelsea High, is not an entirely new face. She did her student teaching in Chelsea last fall. Mrs. Oswald has a BA and an MA from the University of Michigan.

The new science teacher on the staff is Judith Scott. Mrs. Scott has a BS from East Texas State University. She taught the last three years in Oklahoma City, Okla.

Also a former student teacher from Chelsea is Samuel Vogel, history teacher and assistant wrestling coach. Vogel received his BA from the University of Michigan in 1969, and

taught last year at Cassidy Lake.

At this time, there is no agriculture teacher to add to this list. The school administrators are still trying to hire one as of this date.

At the Junior High school, there will be seven new teachers.

Mrs. Susan Harding, who has a master's degree from the University of Michigan, will be the new counselor, and will teach eighth grade English.

Mary DeSmet will be teaching 6th grade language arts and social studies. Mrs. DeSmet has a bachelor's degree from the University of Detroit, and has previous teaching experience in Detroit schools.

Randall Johnson, who has a bachelor's degree from Eastern Michigan University, will be teaching 7th grade English. (Continued on page three)



MRS. NANCY CORCORAN
High School English



MRS. BONNIE JO MEADOWS
6th Grade



MRS. JUDITH SCOTT
High School Science



MRS. MARY DESMET
6th Grade Language Arts

WEATHER

	Min.	Max.	Precip.
Wednesday, Sept. 2	42	79	0.00
Thursday, Sept. 3	44	82	0.24
Friday, Sept. 4	63	80	0.00
Saturday, Sept. 5	64	83	0.00
Sunday, Sept. 6	68	81	Trace
Monday, Sept. 7	80	85	Trace
Tuesday, Sept. 8	84	86	Trace

By H. K. L.

The Chelsea Standard

ONE HUNDRED-FIRST YEAR—No. 12

12 Pages This Week

CHELSEA, MICHIGAN, THURSDAY, SEPTEMBER 10, 1970

15c per copy

SUBSCRIPTION: \$4.00 PER YEAR

Public Hearing On Bond Issue Set By Council

Approval Sought on \$500,000 Issue To Improve Existing Sewer System

Monday, Sept. 21, residents of the village of Chelsea will be asked to approve a \$500,000 General Obligation bond issue to provide funds for the improvement of the existing village sewer system. On that Monday, the polls will be open from 7 a.m. to 8 p.m. in Sylvan Township Hall.

Every registered voter in the Village is eligible to vote, there is no property ownership requirement. The money is needed to relieve potential overload conditions which exist in the sewer major trunk system of the village. The Freer Rd., Washington St., Flanders, Madison St. loop, as well as the S. Main St. collection system are at capacity and under adverse conditions would not be able to carry the load.

On the western side of the village conditions are not as critical but are none-the-less near capacity. All the sewage from the western side of the village and from the S. Main St. area meets that collected on the east side at the corner of Dewey and McKinley Sts., and from that point proceeds down McKinley to the treatment plant.

Because of surface water infiltration into the sanitary sewer system this intersection experiences difficulty in carrying the load during periods of very heavy rain.

These facts have caused the village council to place a moratorium on all additions to the village sewer system, which in effect has greatly limited any additional growth in the village.

In order to alleviate these potentially dangerous conditions the village council is asking the voters to approve the bond issue which would allow the village to construct that portion of the Master Sanitary Sewer Plan, drawn up by the engineering firm of Finkbeiner, Pettis & Strout for the village in 1969, which relates to the improvement of the existing system. The Village Council is not asking for funds to expand the system beyond its present boundaries. However, these improvements will then allow private developers to extend the system, at their own cost, into new areas.

The village council will hold a public hearing at the council room. The public is invited and encouraged to attend this meeting.

ALASKA REPORTER RETURNS

Don Turner, Chelsea's roving reporter, is back in town after his summer's travels in Alaska and the Pacific Northwest. Turner returned home, Friday, Aug. 28, driving the entire stretch from Alberta, Canada to Chelsea in three days.

Republican Ox Roast Set For Sunday

County Republicans will hold their annual Ox Roast from 1 to 6 p.m. this Sunday, Sept. 13 at Delhi Park.

This event offers area voters a unique opportunity to meet and talk with Republican office holders and office seekers while enjoying a picnic with fun for the entire family. Those attending will again include city councilmen, county commissioners and officials as well as U.S. Congressman Marvin L. Esch, and state Senator Gilbert E. Bursley and State Representatives Tom Sharpe, Ray Smit and Roy Smith. Judges Henry Arkison, Ross Campbell and S. J. Elden will also participate.

Special guests are Governor William Milliken, who will give a short talk, Secretary of State nominee, Emil Lockwood and Supreme Court Justice John R. Dethmers. Jack Shuster and Paul Goebel, Jr., nominees for U.M.W. Regent, and WSU Board of Governors candidates Earl Kennedy and Raymond Hayes will be joined by David Robinson and Robert Geake who seek seats on the State Board of Education.

Mrs. L. Ray (Sharleen) Bishop, 1970 Ox Roast chairman, notes that the menu will include the traditional "ox" burgers (roast beef), German potato salad, apple rings and a choice of coffee or lemonade. The Republican Ladies Club will offer a wide variety of home-cooked baked goods for dessert. County Young Republicans will have pop and ice cream as well as again providing a fish pond, penny pitch and dart games for the children. Last year's very popular baseball dunk, which delighted young and old alike will be repeated. Special entertainment feature will be a group of clowns.

(Continued on page five)



BULLDOG GENERALS: CHS varsity football coach Phil Bareis makes his directions perfectly clear for captains Larry Gorton, Jeff Bust, and Jim Wojcicki, at a pre-season practice at the high school field.

Pre-Season Grid Scrimmage Slated Tomorrow Evening

With the first football game of the season a week away, Coach Phil Bareis of the Chelsea High School Bulldogs claims the team will be ready.

The Bulldogs are a strong team this year, with 15 returning letterman, and 18 senior men on the team. Out of a total of 86 boys who showed up for practice the first day, Bareis has chosen 34 as potential varsity team members. Captains for this year's team are Larry Gorton, Jim Wojcicki, and Jeff Bust.

Returning lettermen on this year's team are Tom Harmon, Jim Orbring, Mitch Heard, Tom Lukasiak, Bob Salyers, Larry Gorton.

Jeff Bust, Jack McClear, Jim Wojcicki, Mike Powers, Duane Bycraft, Dale Robbins, Mike Griffin, Chris Maurer, and Randy Seitz. Chelsea football fans will have a chance to see the team in action for the first time tomorrow night, Friday, Sept. 11, at a pre-season four-team scrimmage at 7 p.m. at the high school field. Tecumseh, Brighton, and Michigan Center teams will meet with the Chelsea Bulldogs. Area residents are welcome to come and see how the Chelsea team stacks up against the others.

Robertson will preside until Nov. 20, when newly-elected officers from the Nov. 3 election are named. Candidates for Dexter township supervisor are John Tandy, Republican, and Earl Doletsky, Democrat.

School Starts On Schedule, No Contract

CEA Votes To Work While Waiting For Fact Finder's Report Sunday

The CEA held a general membership meeting, Monday, Sept. 7, to discuss the marathon fact-finding sessions held over the Labor Day week-end. Taking into account the detailed investigation made by the fact-finder, George Roumell, of the remaining differences between the Board of Education and the CEA, it was the recommendation of the CEA Executive Council to await Roumell's report, which is due Sunday, Sept. 13, before deciding if it will be necessary to withhold services. The CEA general membership voted to accept the executive council's recommendations.

Therefore, teachers began school without a contract on Sept. 8. On Tuesday, Sept. 15, there will be a CEA general meeting to study the recommendations offered by Roumell. The CEA will communicate its position to the Board of Education. At the recommendation of Roumell, the board will have 72 hours in which to study the report and make its recommendation.

If the CEA and the board both agree to accept the fact-finder's report, school will proceed as usual. If the CEA accepts the fact-finder's report, and the board rejects it, the possibility exists that there will be a strike vote taken on Sunday, Sept. 20.

Robertson will preside until Nov. 20, when newly-elected officers from the Nov. 3 election are named. Candidates for Dexter township supervisor are John Tandy, Republican, and Earl Doletsky, Democrat.

Dexter Teachers Reach Agreement Wednesday Night

Tentative agreement was reached on a master contract settlement between the Dexter Board of Education and the Dexter Education Association shortly after 11 p.m. Wednesday, Sept. 9.

Details of the settlement were not immediately available pending a meeting of the DEA at which the membership will be asked to ratify the contract.

Negotiators had met with the state mediator from 3 p.m. Wednesday until 11 p.m. when the tentative agreement was reached.

Fact Finder Holds Marathon Sessions Friday, Saturday

George Roumell, fact-finder for the Chelsea School District teacher's dispute, met with the CEA negotiators, Friday, Sept. 4 from 4:30 p.m. to 11 p.m., and again on Saturday, Sept. 5 from 10:30 a.m. to 7 p.m.

Roumell indicated that he will have his complete report available Sunday, Sept. 13.

Lima Planners Seek Support of Neighboring Units in Utility Fight

The open meeting of the Lima Township Citizens Committee on Public Utilities, held Wednesday night, Sept. 2, in the Lima Community Hall drew more than 30 people, including people from all six townships involved in the fight to stop Detroit Edison from sending a power line through those townships.

Present were four township supervisors, three members of assorted planning commissions, and Lima township attorney John Keusch. Outcome of the meeting was that the Lima Township Planning Commission will await the response of the surrounding communities of Dexter, Bridgewater, Freedom, and Sylvan, before deciding the action it will take with respect to Detroit Edison.

If the townships move to back up Lima Township with similar action, the Planning Commission will not allow the Detroit Edison structure to go through the township because the land which Edison proposes to use is zoned for agriculture purposes and Edison wishes to use it for commercial purposes. For Detroit Edison to be allowed to go through, the township would have to zone the land for commercial purposes.

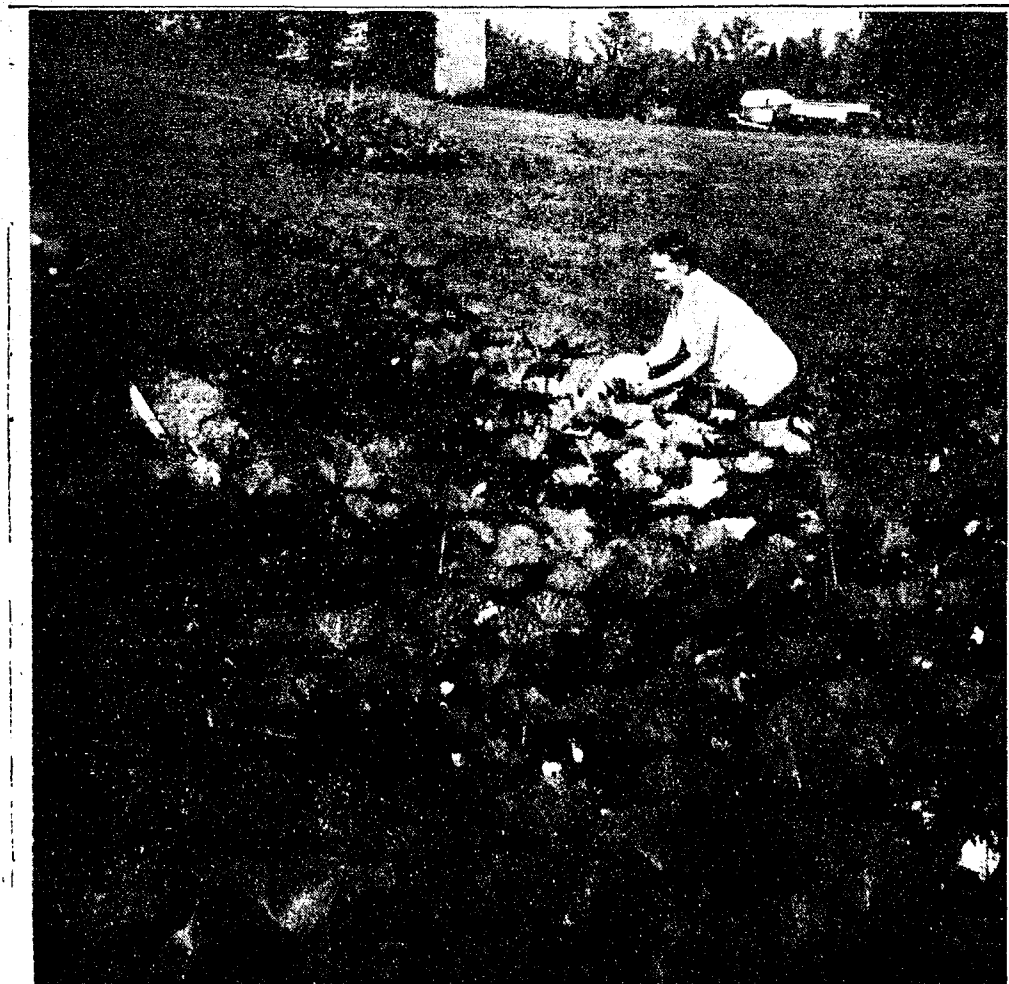
If the townships do not wish to support Lima township on this action, the Planning Commission will issue a "conditional use" permit to Detroit Edison. This would permit Edison to go ahead and use the land as they had proposed.

The permit, however, would not allow them to use the land for anything other than their proposed structure, without, of course, rezoning.

The Tuesday, Sept. 8, meeting of the Planning Commission was canceled because of an illness with the secretary of the commission, Virginia Denham, who was hospitalized last week. At present the commission is awaiting the word of the other townships to decide what their next move will be.

son proposes to use is zoned for agriculture purposes and Edison wishes to use it for commercial purposes. For Detroit Edison to be allowed to go through, the township would have to zone the land for commercial purposes.

If the townships do not wish to support Lima township on this action, the Planning Commission will issue a "conditional use" permit to Detroit Edison. This would permit Edison to go ahead and use the land as they had proposed.



JACK AND THE BEANSTALK has a new rival! Mrs. Geraldine Rushing, 13362 North Lake Rd., is shown above with the banana squash she grew this summer in her flower box! The vine which is about 50' long, is from a handful of seeds Mrs. Rushing threw into her box this spring, after planting the flowers. The seeds are from a banana

squash that she bought in Louisville, Ky., last fall on a trip through the Farmer's Market. The squash is not yet ripe, Mrs. Rushing claims, but when the squash is mature, it can be baked in the oven like a regular Hubbard squash. It is a sweet vegetable, with the slightest hint of banana flavor.

Frank Reed, 14072 North Territorial Rd., is in St. Joseph Mercy Hospital, room 554, bed 2. He was rushed to the hospital Tuesday, Sept. 8, and will be hospitalized for an indefinite period.

Gary Albrecht Will Head Community Chest Campaign

At the Saturday, Aug. 19 meeting of the Chelsea Community Chest, Gary Albrecht was named campaign chairman for the 1971 campaign. A meeting to develop the 1971 campaign further will be held Wednesday, Sept. 16 at the Municipal Building.



SEWER IMPROVEMENT PLANS: Village trustee, William Chandler, speaking at a Kiwanis Club meeting Tuesday evening, Sept. 8, outlined

the village's proposed sewer improvement program for Kiwanians.

Established 1871 **The Chelsea Standard** Telephone GR 5-3531

Excellence Award By Michigan Press Association
1951-1952-1960-1964-1965-1966

Walter P. Leonard, Editor and Publisher

Published every Thursday morning at 300 North Main Street, Chelsea, Mich. 48118, and second class postage paid at Chelsea, Mich., under the Act of March 3, 1879.

ADDRESS CORRECTION REQUESTED

Subscription Rates (Payable in Advance)

In Michigan:		Outside Michigan:	
One Year	\$4.00	One Year	\$8.00
Six Months	\$2.25	Six Months	\$3.50
Single Copies	\$.15	Single Copies	\$.20

Service men or women, anywhere, 1 year \$4.00

MEMBER **NATIONAL NEWSPAPER ASSOCIATION - Founded 1885**

National Advertising Representative:
MICHIGAN NEWSPAPERS, INC.
257 Michigan Ave.
East Lansing, Mich. 48823

Washington Report
by Congressman
MARVIN L. ESCH

A far better public understanding of a possible natural gas shortage this winter has come about since my warning of Aug. 8. While this development is gratifying, it is clear that concerted action over a lengthy period is necessary if this nation is to avoid crippling power shortages.

One encouraging development last month was a decision by the President to name a unit headed by Paul McCracken, chairman of the Council of Economic Advisors, to consider what actions can be taken to minimize the impact of any shortage this winter.

A second development of note is the action of the Federal Power Commission to take another look at the prices it allows natural gas producers to charge. The producers have long claimed that there is plenty of natural gas around, but the profit is not sufficient to encourage exploration and production.

The commission tells me that both private individuals and businesses who were natural gas customers prior to 1970 should suffer little or no shortage this winter, although that depends partly on

the weather. For new customers who hooked in this year the outlook is not quite as sanguine. In a crunch, however, homes will be given first preference on service, businesses second.

New England, at the end of long pipelines from the Southwest, faces a more critical test than does the Midwest. Although the supply may be quite tight in the Chicago area, gas from Canada could help. Or, alternate sources of power might be used such as propane and oil. But, there could be a transportation problem with propane since it is shipped in tanks while oil, if it has high sulfur content, runs into air-pollution considerations.

In any case, one point is quite clear: when you have to talk about priorities among power users or suggest alternate types of power in the clutch, then to a lesser or greater degree national power policies have not worked.

Senatorial Candidates Agree to TV Debate In Late October

East Lansing—The Democratic and Republican candidates for the U. S. Senate from Michigan have agreed to appear in a one-hour television debate in late October on WMSB (Channel 10), Michigan State University television.

Spokesman for incumbent Phil Hart and his opponent, Mrs. Lenore Romney, indicate that the two are willing to meet in a head-to-head debate on Oct. 22 at WMSB. According to Tim Skubick, program producer and capital correspondent for WMSB's news and public affairs series "Assignment 10," both candidates expressed a great interest in the broadcast.

Differing from the usual format, the candidates will field questions from a live audience and from members of the Capitol Press Corps. The League of Women Voters also is co-operating with WMSB in this production.

Details are presently being worked out to offer the program on a delayed basis to every television and radio station in the state.

Dexter Dentist Completes Term as Chairman of Better Dentistry Forum

Dr. Robert Turck, Dexter dentist, is completing his term of office as chairman of the Forum of Better Dentistry. Dr. Turck is a founder of the Forum and served as its first chairman.

Dr. Robert Murray of Tecumseh was appointed by the steering committee of 25 dentists, from all parts of Michigan, to the chairman's position for 1970-71.

MONEY TROUBLE?
ONE PLACE TO PAY!
Credit Management Service
662-2565
215 South Fifth Ave.
Ann Arbor
State Licensed and Bonded

Howell Livestock Auction
The Wise Owl Says Ship to Howell
SALE EVERY MONDAY, 2 p.m.
Phone 546-2470, Ben Franklin
Mason 677-8941

Market Report for Sept. 7

CATTLE—

Steers and Heifers:

Choice, \$29 to \$31.25
Good, \$27 to \$29
Ut.-Std., \$23 to \$26
Fed Holsteins, \$24.50-\$27.50

Cows:

Heifers, \$23 to \$25
Ut.-Comm., \$21 to \$23.50
Canner-Cutters, \$18 to \$21
Fat Yellow Cows, \$19 to \$21

Bulls:

Heavy, \$26 to \$28.50
Light and Common, \$22-\$26

Calves:

Prime, \$44 to \$48.50
Good-Choice, \$40 to \$44
Cull-Med., \$30 to \$35
Heavy Deacons, \$44 to \$50
Light Deacons, \$38 to \$44

Feeders:

Good-Choice, \$32 to \$40
Common-Med., \$24 to \$32
Dairy Cows, \$240 to \$400

HOGS—

Butchers:

190-lb. to 240-lb., No. 1, \$20.50 to \$21.90
190-lb. to 240-lb., No. 2, \$19 to \$20.50
240-lb. and up, \$18 to \$19

Sows:

Fancy Light, \$17.50 to \$18.50
300-lb. to 500-lb., \$16 to \$17.50
500-lb. and up, \$15 to \$16

Boars and Stags:

All Weights, \$14 to \$17

Feeder Pigs:

Per Head, \$12 to \$17

SHEEP—

Woolled Slaughter Lambs:
Choice-Prime, \$26 to \$28.50
Good-Util., \$24 to \$26

Ewes:

Slaughter, \$8.50 to \$12

Feeder Lambs:

All Weights, \$24 to \$27

SEAMLESS ALUMINUM GUTTERS
Also: Barn Eavestroughing

— ★ —
CALL

WILSON METAL SHOP
Phone 428-8468 Manchester, Mich.

OBEY ALL TRAFFIC RULES

DRIVE CAREFULLY

★ MICHIGAN MIRROR ★

By Elmer B. White, Secretary, Michigan Press Association

Oversupply of Teachers

For many years, one of the main problems faced by school boards in much of Michigan was the difficulty in finding enough qualified teachers to fill out the faculty.

The population explosion created a situation where the number of openings was larger than the number of teachers available.

Thus, anyone who wanted to be guaranteed of a job could go to college, get a teaching degree and pick and choose between offers from several schools.

That situation, however, has changed drastically, and it did so quickly.

The State Board of Education, in fact, says the state is now faced with an "oversupply" of teachers.

And it says the problem is "one that the state will need to learn to live with for some time to come."

The board says enrollments in elementary schools already have

hit a peak and will be going downward in the next years, as the result of a slackening in the birth rate hit the schools. It predicts high school enrollments will hit a peak in 1975.

That would mean that while more and more teachers are being turned out by schools, fewer and fewer openings will be available for them to fill.

The president of the state board, Dr. Peter Oppewall of Grand Rapids, says several factors besides the change in school enrollments have caused the changed conditions.

"First," he says, "increases in higher education enrollment in Michigan have resulted in a parallel increase in teacher production. Teacher production rates have increased substantially during the past four years."

In addition, he says, "teacher salaries, fringe benefits and working conditions have improved, and this has tended to retain many teachers in teaching rather than

encouraging them to elect other types of work."

"These same factors have attracted a number of former teachers back to the classroom, and teachers to come here from other states," Oppewall adds.

Several college and university placement officers reported trouble finding jobs for all of their spring graduates with teachers degrees, says the president.

"It is entirely possible that several hundred spring and summer graduates will not find teaching positions for the 1970-71 school year," he states. "With an opportunity to be more selective, employers are tending to place a greater emphasis on grade point averages and the nature of the experience, reports from former employment and/or student teaching."

Another consequence, he said, may be the pushing out of jobs of the several thousand persons who have been hired as teachers under temporary permits provisions because of a lack of teachers with degrees and permanent certificates.

Thousands Helped

Nearly one-third of a million Michigan residents are being fed today at least partly because of the U.S. Agriculture Department's food assistance programs.

The USDA's latest figures show 321,000 Michiganders are either receiving food from distribution programs or are able to purchase food stamps.

The Commodity Distribution Program provides more than 20 different foods to supplement the diets of needy persons.

The Food Stamp Program enables low-income persons to buy more food by exchanging money for coupons which are worth more for food than the money they are bought with could buy.

At last count, 288,940 persons were participating in 57 food stamp programs while 31,934 persons were involved in a food distribution program somewhere in the state.

In a survey of 11 midwestern states, it was determined more than two million persons received food assistance of some sort from the USDA.

Of that total, 400,000 were in commodity programs while nearly 1.7 million were participating in food stamp programs.

DOUBLE FEATURE

If you have a window box overhanging a walk or patio, you can easily achieve a "double feature" plant display by grouping clay-potted flowering plants on the ground, or on a bench below the window box.

Yours truly,
Uncle Lew.

Uncle Lew from Lima Says:

Dear Mister Editor:

This true story was given the full attention of the fellers at the country store Saturday night, and after all the evidence was in the jury ruled that man bit off more than he could chew when he made the first computer. The fellers was agreed the computer has as much power for good and evil as the split atom.

Zeke Grubb's preacher stopped by to set a spell and he had to fill his pipe five times afore he got the story told to the understanding of the least of us. I'll try to set it down for you as a lamp unto the feet of all that comes after us. That was the way the preacher put it.

This young feller started from scratch in his ladies ready to wear shop, and he's been scratching ever since. About a year ago he bought a whole season's order of clothes, \$25,000 worth. He opened some boxes and found out quick that sizes and styles was all jumbled up. He called the company and they told him what happened was the computer they use to fill orders must of gone off its rocker, if them things has rockers. They told him to send the clothes back and they would run his order back thru the computer.

He boxed all the clothes up and put em on a truck. The truck went to a warehouse where loads of frate for different places was made up. That night while the clothes was waiting to be shipped

on, the warehouse was broke into and jest about all the clothes was took.

That set off a chain reaction, and the not in the chain is around the neck of the ladies shop owner, cause he's the small fish on the hook. He don't have clothes to sell, the company don't have clothes, so they won't fill his order right or give him his money, the trucking company ain't got the clothes and the warehouse ain't got em, and their lawyers and their insurance company lawyers is using ever legal trick to keep from paying damages.

While the case goes round in court, the store has stopped going. The young feller had all his money tied up in them stole clothes, so he can't buy nothing to sell. Since he ain't doing no business, he can't meet payments on a loan, so he and his store is about to dry up and blow away. The lawyers keep gitting delays on his suit for damages.

Mister Editor, I hope the young feller wins his case in a hurry and can save his business. Course the crooks that broke in the warehouse has the big hand in his trouble, and them high powered lawyers ain't helping him none, but that computer shore is a cessary, a complice or whatever it is you call a helping out crook. The computer ought to be locked up so honest folks would have to go back to counting on their fingers.

JUST REMINISCING

Items Taken from the Files of The Chelsea Standard

4 Years Ago . . .

Thursday, Sept. 15, 1966—

General Dwight E. Beach is welcomed to his new assignment as Commander in Chief, U. S. Army, Pacific, Thursday, Sept. 1, with honor guard ceremonies at Fort Shafter's Palm Circle. General Beach, a native of Chelsea, and a graduate of Chelsea High School, is a four-star general.

Chelsea High School gridders will begin the 1966 season, Friday, Sept. 9. Chelsea's football team will meet Stockbridge High school at Stockbridge in a non-league encounter. Chelsea's team consists of 32 boys on the varsity, and 33 on junior varsity, for a total of 65. This is down from the 76 total that showed up for practice at the beginning of the year. Returning lettermen are Danny Allen, Larry Porath, Jack Speer, Mike Lehmann, Lyndon Benjamin, Bill Harvey and Km Flintoff.

14 Years Ago . . .

Thursday, Sept. 15, 1956—

There was a record number of exhibits at the Chelsea Community Fair, Marlene Kuhl was crowned queen. Neil Haarer of Saline won first prize for his 1,095-pound prize Hereford steer at the livestock show. It was purchased by Waddell Brothers for 45 cents per pound. Eighteen other animals were auctioned off at the fat stock sale, bringing prices of 28 1/2 cents per pound to 32 1/2 cents per pound.

Mary, Mike, Bob, and Cindy McCalla, calling themselves the "Harmony Four" won first prize in the Kiwanis-sponsored amateur contest at the Chelsea Community Fair, Wednesday, Sept. 5.

Chelsea Milling Co. is host to 100 representatives of Wolverine District No. 6 of the Association of Operative Millers. They are expected to attend the annual fall meeting being held in Jackson, Friday and Saturday. Howard Holmes, president of the association, is to give the welcoming address Saturday, at 9 a.m.

24 Years Ago . . .

Thursday, Sept. 12, 1946—

Public school is open with a "big" enrollment of 555. The senior class has 54 students.

Bob Daniels was left end in the starting line-up for the Bulldogs football team's first encounter of the year against Parma. Also in the starting line-up were Jack Wellnitz, Micky Grafson, Jerome Burg, Laverne Hadley, Don Barth, Don Baldwin, Ray Knickerbocker, Doug Vogel, and Bragdon Barlow. David Slane was fullback for the team.

Preparing for the biggest hunting season since before the war, the conservation department next week will begin the mailing of 1,288,100 licenses, 147,000 more than last year. In this second post-war season, the first in which former service men will partici-

Mike's TV Antenna Service

Motorola Automotive Sound Systems

Winograd Home Electronics

TV Antenna Systems

Insurance Claims

For Free Estimate, Call

Pinckney 878-3258

or 769-0130

ipate in great numbers, conservation officials are without a "yardstick" for accurately forecasting the number who will go hunting in Michigan for small game and deer.

More peaches were sold over the Benton Harbor Market on Labor Day than any other day in the history of that market. A total of 104,167 bushels were sold by 8 p.m. and were on their way to consumers in 23 states and Canada, states Charles Figy, Director of Agriculture.

34 Years Ago . . .

Thursday, Sept. 3, 1936—

Kenneth Hallenbeck, superintendent-manager of the Washtenaw County Road Commission, was in Chelsea and vicinity on Saturday, investigating the promiscuous dumping of garbage, tin cans, etc., along county roads. Hallenbeck stated that many of the roadsides in this vicinity, as well as in other parts of the county, are strewn with rubbish of all kinds.

All of the granges in Washtenaw county were represented at the picnic sponsored by Lafayette Grange, which was held Friday at Lima Center church. About 175 took part in the pot-luck dinner, after which a program was given.

Through the 30 posts, Michigan State Police this week sent a warning to farmers to check carefully on all strangers who come to their farms to negotiate purchase of poultry or stock.

The game is, the troopers have learned, for thieves to call in daylight on a pretext of buying. The visit gives the opportunity to look over poultry and stock, see how it is kept, and generally get the "lay of the land." They then re-

turn under cover of night and help themselves. In all cases where there is a call to negotiate a purchase, farmers are being urged to make a note of the car license numbers, and observe the callers closely. Then, in the event of a night raid, they would have information which their sheriff or state police could use effectively in recovering the stolen property.

Work of wrecking the house on the site for the new Chelsea post office, which was started last Thursday has progressed rapidly. It is expected all the debris will be cleared from the lot this week, according to R. S. Spence of Spence Bros. Construction Co., general contractors on the project.

Chelsea public school program opened Monday with a total enrollment of 495, an increase of several students over last year.

Traffic Volume Data Available from State Highway Dept.

Lansing—Traffic flow maps and booklets showing traffic volumes on all state highways in Michigan are now available on request from the Department of State Highways.

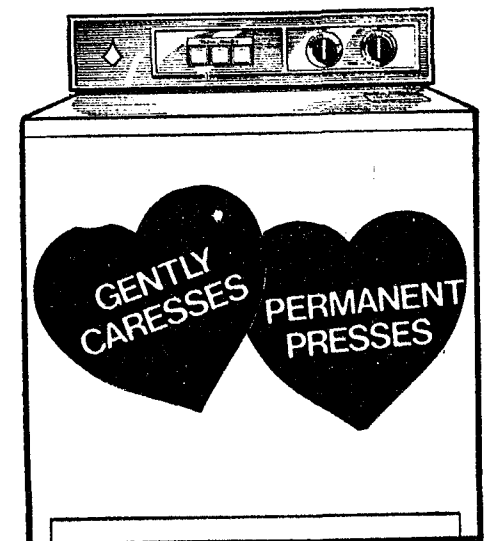
The traffic flow map, resembling an official state highway road map, shows average 24-hour traffic volumes on all state highways. The booklet shows average 24-hour traffic volumes on state highways in 19 major Michigan cities. The maps are available at 50 cents a copy and the booklets are \$1 a copy.

Requests for the publications should be directed to the Publications Unit, Contracts Section, Department of State Highways, P.O. Drawer K, Lansing. Checks should be made out to the State of Michigan.

Farming uses more petroleum than any other single industry.

End of Summer CLEARANCE
Our Entire Floor Stock of **FINE FURNITURE and APPLIANCES**
Drastically Reduced
To Make Room for New Fall Merchandise
Arriving Daily
MEABON'S TV, Furniture & Appliances
1170 M-52 South, Chelsea Phone GR 5-5191

THE LUV MACHINE A GAS DRYER



It's love, pure and simple, the first time you use The Luv Machine, a Gas dryer. And why not? A Gas dryer is so good to clothes. Leaves them soft, fresh-smelling. In fact, a special setting gently careses permanent press things so they don't need any ironing. And there's the way a Gas

dryer saves money. Dries five loads of clothes for the price of one load in an electric dryer. Does a load up to 10 minutes faster, besides. Buy a Gas dryer at your appliance dealer's or Michigan Consolidated showrooms. You'll love everything about it.

MICHIGAN CONSOLIDATED GAS COMPANY

Our First Big AUCTION
SATURDAY, SEPT. 26-All Invited
Everything from tractors to grease guns
- you name it, we will be selling it!
If you have anything that YOU would like to have sold, please call 426-8527.
REFRESHMENTS WILL BE SOLD
Mark the date on your calendar and try not to miss it.
FARM MACHINE REPAIR
Corner of N. Territorial and Huron River Dr. Johnny & Ed Boullion

New Teachers Join Faculty

(Continued from page one)

Michigan University, will be teaching boy's physical education. He is also the new assistant junior high school football coach.

In the library, Mrs. Mary Paulin will be a new librarian, and instructional materials director. Mrs. Paulin has a bachelor's and a master's degree from Western Michigan University. She has previous teaching experience in Indiana schools.

In the science department, the new face is Carol Steiner. She has a bachelor's degree from Eastern Michigan University.

Judith Ward, who has a bachelor's degree from Indiana University, and a master's degree from Eastern Michigan University, will be teaching both English 7, and girl's physical education.

Beverly Yelsik, with a bachelor's degree from Michigan State University, is new to the art and vocal music departments at the junior high school.

There is a grand total of nine new elementary school teachers in Chelsea schools this year.

At North school, there are two new 5th grade teachers: Mrs. Marie Crouch, and Cynthia Mortensen. Mrs. Crouch has a bachelor's degree from the University of Michigan, and a master's degree in elementary education from Eastern Michigan University. She has substituted in Chelsea for the past two years. She has previous teaching experience in Grandville.

Mrs. Mortensen has a bachelor's from Eastern Michigan University. She has taught at Milford, Belleville, and Clawson in the 4th and 6th grades.

There is a new special reading teacher this year at North

school, Marianne Williams. Mrs. Williams has a bachelor's degree from the University of Northern Iowa, Cedar Rapids. She has taught previously in Carpentersville, Ill.

At South school, there are two 3rd grade teachers new to the system this year.

Judith Ann Hannuksela, a graduate of Northern Michigan University, has five years teaching experience at Rudyard, and Gwin.

Anne Hanna, a graduate of Western Michigan University, has seven years experience teaching. Mrs. Hanna's first three years were in Chelsea, after which she taught for four years in Columbus, O.

In the 4th grade, Bonnie Jo Meadows will be teaching for the first time. Mrs. Meadows is a graduate of Eastern Michigan University.

Catherine Hightower, a graduate of the University of Michigan, will also be teaching for the first time. She will teach 5th grade.

Miss Clare Charles, a graduate of Wayne State University, will be the new "helping teacher" at South school. This will be her first teaching position.

Both schools will "share" the new music teacher, Diana Veenkant. Mrs. Veenkant has a master's in music from the University of Michigan. She has taught in Garden City and Plymouth, and Richardson, Tex.



RANDALL JOHNSON
Junior High Physical Education



MRS. MARY PAULIN
Junior High Librarian



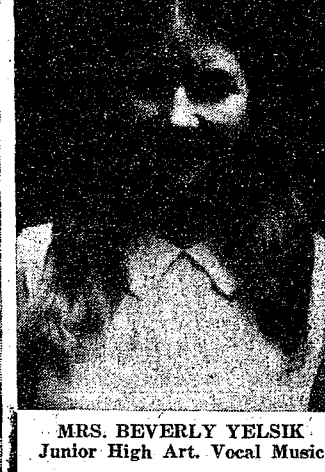
MRS. CATHERINE HIGHTOWER
5th Grade



MRS. JUDITH WARD
Junior High English, Phys. Ed.



MRS. CAROL STEINER
Junior High Science



MRS. BEVERLY YELSIK
Junior High Art, Vocal Music



Bicycle Awarded Lucky Children at Community Fair

Christine Boyer, daughter of Mr. and Mrs. Fremont Boyer, 47 Chestnut Dr., and Johnny Toon, son of Mr. and Mrs. John L. Toon, 526 Arthur, were the lucky winners of bicycles Wednesday night, Aug. 26 at the bicycle give-away at the Chelsea Community Fair.

The bicycles, which were given in part by Ingalls Amusement Co., and half by the Fair Board, were scheduled to be given away Tuesday night, Aug. 25, but a mix-up caused the give-away to be Wednesday night. A drawing decided the winners.

Christine, who is 13, and Johnny, who is 12, were both delighted with their new bikes.

Police Arrest Young Man for Possession of Stolen Credit Card

Chelsea Police Sgt. Dave McCormick, and Patrolman Louis Schneider, arrested a young man, Saturday, Sept. 5, for possession of a stolen credit card. The man, Reginald D. Moore, Gary, Ind., produced a credit card that did not belong to himself at Don's Standard station.

He was arraigned in District Court, Sept. 5, in Ann Arbor, where he demanded an examination, which was set for Sept. 28. Bond was set at \$2,500.

80-YEAR-OLDS TRAVEL TO ALASKA: Earle and Elsie Pettibone, 2220 Dancer Rd., both in their 80's, have just returned from a trip over the Alcan highway, which they took in a 20-foot motor home. The Pettibones, guests of their daughter, and son-in-law, Floyd and Dorothy Fowler, 2350 Dancer Rd., left Aug. 4, and returned Sept. 4. They traveled a distance of 9,030 miles on the trip that took them to Banff, Lake Louise, and Jasper. Their destination was Anchorage, Alaska, where they visited their grandson, Dean Fowler, and his family. Dean is the son of Mr. and Mrs. Floyd Fowler. While in Anchorage, Earle Pettibone caught a 14-pound salmon, the largest fish he had ever caught in his life.



Graphic Arts
DENNIS ANDARIESE

Subscribe today to The Standard

HELLER ELECTRIC & INSULATING

Licensed Electrical Contractor
ALL TYPES OF WIRING
THERMTRON
INSULATION

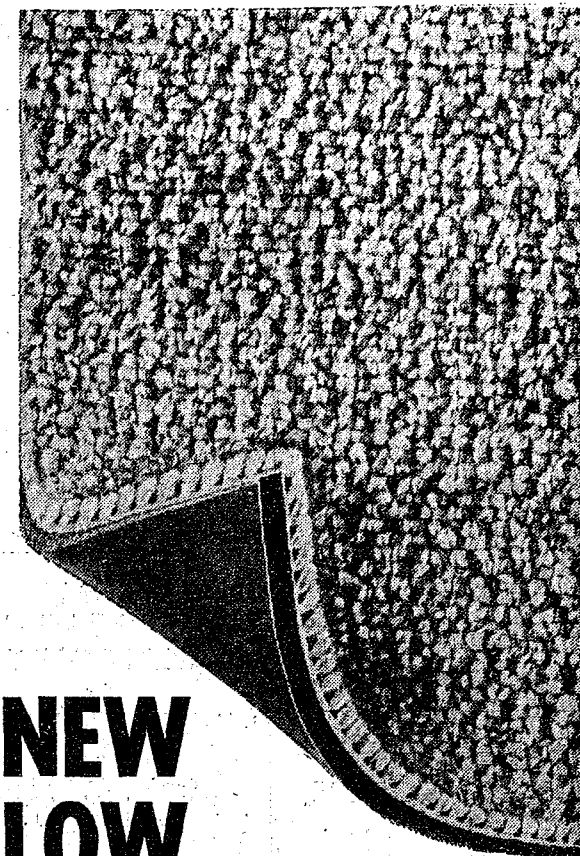
Call After 5 p.m.

475-7978

20640 Sager Rd., Chelsea

SENIOR CITIZENS
Senior Citizens Social meeting was held Sept. 3, with 18 members present. Cards were played, and refreshments were served. Mrs. Margaret Dietle, and Mrs. Amy Dettling were on the committee for refreshments.

There will be a pot-luck supper for the group on Sept. 17, at 6:30 p.m. Mrs. Loretta Doll, and Mr. and Mrs. Charles Bycraft, are on the committee to organize the supper. All members with birthdays in September are urged to attend. Dues are payable for the year.



NEW LOW PRICE

... Nylon tweed rubber back carpet. Use almost anywhere ...
A real do-it-yourself carpet.

Six sparkling colors

Sale \$4⁵⁹ sq. yd.

Regularly \$5.95

Merkel
FURNITURE & CARPET

SALE ENDS SAT., SEPT. 26

SPECIAL

thru Wednesday, September 16, 1970

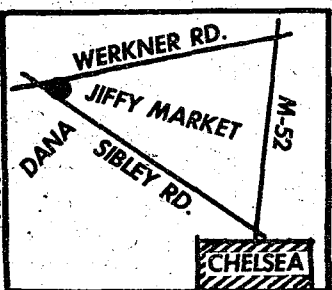
BRAZIER BURGER & SHAKE

85^c

Home of fine Brazier foods.



901 S. MAIN ST., CHELSEA PHONE 475-2677



HOURS:
7 AM - 10 PM
OPEN 7 DAYS A WEEK!
PHONE 475-5701

Jiffy market

COMPLETE
SUPER
MARKET

BIG ENOUGH TO SERVE YOU.....SMALL ENOUGH TO KNOW YOU!

Corner of SIBLEY & WERKNER RDS....CHELSEA, MICHIGAN

DAILY and SUNDAY NEWSPAPERS AVAILABLE

Prices Effective Thurs., Sept. 10 thru Sunday, Sept. 13, 1970.

Open 7 a.m. to 10 p.m. for Your Shopping Convenience

RISDON'S TOP QUALITY
HOMOGENIZED

MILK
1/2 Gal. **39^c**

NO STAMPS - NO COUPONS
NO CHEAP GIMMICKS

HUNT'S
**TOMATO
CATSUP**

14-Oz. Bottle

19^c

**PEPSI-
COLA**
SPECIAL

8 Pak 10-Oz. Non-Return **89^c**

FISHER'S
**SALTED
PEANUTS**

One Pound

39^c

**KLEEN-MAID
BREAD**

2 1 1/4-Lb. Loaves **49^c**

A Holsum Product

CANADA
DRY
Assortment
of flavors.

**SODA
POP**

1-Pt., 12-Oz. Bottle **22^c**

CIGARETTES

All Popular Brands

\$3³⁹
CARTON

**JIFFY MARKET
GAS
PUMPS**

OPEN 7 a.m. to 10 p.m.

Get Ready for Sloppy Weather,
READY-TO-USE 500-XL
**WINDSHIELD
WASHER**
ANTI-FREEZE & SOLVENT
Full Gallon Plastic **75^c**
Ready-To-Use!

**MARATHON'S TOP QUALITY
MOTOR
OIL**
10 - 20 - 30 WEIGHT
YOUR CHOICE
39^c qt.
OIL AT SUPERMARKET PRICES

GASOLINE
MARATHON
REGULAR **31.9** gal.
MARATHON
PREMIUM **35.9** gal.
Above Gas Prices
Include All Taxes
Save up to \$1.60 on a tank full.

Ads
Taken
Till 5 p.m.
Tuesday

IT'S EASY TO
BUY-SELL-RENT-
HIRE & FIND WITH

WANT ADS

Just
Call
GR 5-3581

WANT ADS

**The
Chelsea Standard**

WANT AD RATES

PAID IN ADVANCE—All regular advertisements, 50 cents for 25 words or less, each insertion. Count each figure as a word. For more than 25 words add 2 cents per word for each insertion. "Billed" ads or box number ads, 50c extra per insertion.

CHARGE RATES—Same as each in advance, with 15 cents bookkeeping charge if not paid before 5 p.m. Tuesday preceding publication. Pay in advance, send cash or check or save 15 cents.

DISPLAY WANT ADS—Rate, \$1.10 per column inch, single column width only, 8-point and 14-point light type. ODDS OF THANKS or MEMORANDUMS—Single paragraph style, \$1.00 per insertion for 50 words or less; 2 cents per word beyond 50 words. Minimum, 1 inch.

DEADLINE—5 p.m. Tuesday week of publication.

CAR RENTAL by the day, week-end, week or month. Full insurance coverage, low rates. Call Lyle Chiswell at Palmer Motor Sales, GR 5-3271.

**WORK SHOE
HEADQUARTERS**

Famous Red Wing Brand
\$12.95 to \$26.95

Foster's Men's Wear

USED TRACTOR TIRES—Large inventory hand. Also used passenger truck grader tires. Jackson Tire Brokers, M-106, M-107, Mich. Ph. 596-2925.

**ALLSTATE
INSURANCE**

AUTO - BOAT - COMMERCIAL
LIFE - HEALTH - HOME
LIABILITY

Phone Even. or Week-ends for
N. H. MILES, Agent
GR 5-8334

HELP WANTED, male. Permanent position for ambitious person with high income potential in Chelsea. Metropolitan Life Insurance Co. Call R. Skelly, 971-7020 for interview.

CARPET CLEANING by Burke. 12 cents a square foot, needs overnight to dry. In Chelsea call Merkel Brothers, 475-8621.

WANTED

Boys and girls, 7-12 years old, for the 1970-71 Bowling Season at Chelsea Lanes.

Chelsea Lanes,
475-8141
and come 9:00 a.m.
Saturday, Sept. 12

**Coming to Our
Showroom**

Friday, Sept. 11th

**FORD'S BRAND NEW
SUB-COMPACT**

PINTO

Palmer Ford Sales
Since April, 1912
Chelsea

BE gentle, be kind, to that expensive carpet, clean it with Blue Lustre. Rent electric shampooer \$1. Dancer's, Chelsea.

*Your
Confidence*

... base it
on our long record
of personal service.

Staffan Funeral Home

"Funeral Directors for Four Generations"

124 PARK STREET PHONE GR 5-4417

WANT ADS

BOARDING, trimming, training. Town and Country Kennels, Jackson Rd. at Baker. NO 3-7200.

MOR HEATING & Cooling Co.—Air conditioning, hot water, steam boilers, warm air furnaces. Sales and service. Ph. 498-2853. Gregory.

**Gem Travel Trailers
and Campers**

PICK UP COVERS

4" ————— \$100.00
26" ————— \$179.00 and up

Triangle Sales
Chelsea 475-4802

**FARMS
RESIDENTIAL
LAKE PROPERTY**

for
**QUALIFIED RELIABLE SALES
PERSONNEL
CONTACT**

Carole Bell, 426-8892
Kathryn Smith, 426-5830
Janice Fouch, Saline, 429-4114
Wendel Fouch, Saline, 429-4114

YPSILANTI OFFICE
Arthur Kane, 482-8655
Virginia Oakes, 482-8655

Evinger Real Estate

426-3286
Dexter, Mich.

LOSE WEIGHT safely with Dex-A-Diet, (and remove excess fluid with FLUIDEX. Only 98c and \$1.69 at Chelsea Drug.

**LaFontaine
Construction Co.**

GENERAL CONTRACTORS
COMPLETE BUILDING SERVICE

Residential - Commercial
Emergency Repair Service
FREE ESTIMATES

Phone 475-7494
P. O. Box 160, Chelsea, Mich.

TRAVEL TRAILERS—18 ft. and up; 10x55 ft. trailers. John R. Jones Trailer Sales, Gregory, Mich. Phone 498-2655.

FOR RENT—4 room furnished apartment, including all utilities, no children or pets. Can rent only to middle-aged couple or older people. For further details call 475-8588.

FOR RENT—2 bedroom upstairs, furnished apartment, no pets. In the country about 10 minutes from Chelsea. Ph. 426-3758.

FOR SALE—Spelts. Call 428-4734.

NEW YARD GOODS

For Fall and Winter

BASEMENT

at
DANCER'S

NEEDED

Our two small children need a loving someone (preferably permanent and dependable) to care for them four days a week in our home while I work, 9 a.m. to 3 p.m. \$4.50 per day, exchange references.

Shari Roberts
1969 Old US-12 West
Ph. 475-8904

WANT ADS

**Contractor Servicing
Chelsea, Dexter and
Manchester Areas**

Complete Home Remodeling
Inside and Outside

Specializing in extra living space, recreation rooms, kitchens and paneling. Installing all aluminum products, 5" eavestroughs, custom-made awnings, windows and doors, aluminum siding in many selected colors and styles.

Please Call
DALE COOK
Chelsea 475-8863

HAMMOND ORGAN teachers wanted to teach in their own homes. Call Grinnell Brothers, Ann Arbor, 662-5887.

WANTED TO RENT or Lease—Bob Smith's Horseshoeing. Farm home with room for horses. 429-4885.

PRINTING for the wedding, anniversary, or any occasion. Large selection, 10 percent off of album prices. John's Shop, 475-7500.

LOSE WEIGHT safely with Dex-A-Diet and remove excess fluids with FLUIDEX. Only 98c and \$1.69 at Chelsea Drug.

K. OF C. CHICKEN BAR-B-Q Sunday, Sept. 13 at Stop & Shop lot, M-52. \$1.50.

HELP WANTED, MALE—Tool makers, machinists, lathe, grind and mill hands. Experienced. Apply Thomas Co., Inc., 301 Franklin, Clinton.

**Used
Power Equipment**

3 1/2 Springfield Rototiller.
10 h.p. Simplicity Landlord with 42" mower attachment.
Gamble 4 h.p. rider.
Bolens 8 h.p. tractor with mower, snowblade and carry-all box.
Demonstrator—Bolens 6 h.p. Lawn-scraper riding lawn mower.

Chelsea Hardware

**Used
Power Equipment**

3 1/2 Springfield Rototiller.
10 h.p. Simplicity Landlord with 42" mower attachment.
Gamble 4 h.p. rider.
Bolens 8 h.p. tractor with mower, snowblade and carry-all box.
Demonstrator—Bolens 6 h.p. Lawn-scraper riding lawn mower.

Chelsea Hardware

**Coming to Our
Showroom**

Friday, Sept. 11th

**FORD'S BRAND NEW
SUB-COMPACT**

PINTO

Palmer Ford Sales

Since April, 1912
Chelsea

TRENCHING

4 to 14 inches wide
6-foot deep waterline
Footings, drains, etc.
Call evenings 475-7611

**Slocum Contractors
and Builders**

WANTED

Boys and girls, 7-12 years old, for the 1970-71 Bowling Season at Chelsea Lanes.

Call
Chelsea Lanes,
475-8141
and come 9:00 a.m.
Saturday, Sept. 12

**D. EDWARDS
& SON**

**Home Maintenance
Service**

Vinyl or Aluminum
SIDING - WINDOWS
DOORS
Roofing - Roof Repair
— ALSO —
Building Maintenance
and Supplies

Phone Chelsea 479-4231
or Napoleon 536-4843

TIPS

**REAL
ESTATE**

SEE
MODEL
HOME

"Since you stopped using the Standard Want Ads —
the only prospects we see are birds!"

WANT ADS

LARGE YARD SALE — Friday and Saturday, Sept. 11-12, 9 a.m.-6 p.m. Gorton Rd., Waterloo.

FOR SALE

3 1/2-ACRE building lot with trout stream. \$9,500.
48 ACRES level land, \$500 per acre, excellent terms.
25 LEVEL ACRES. Ideal for subdividing.

NO RENTALS

**R. D. Miller
REAL ESTATE**

Real Estate Broker
GR 9-5892

H. W. Buss
phone 475-8910
15775 Cavanaugh Lake Rd.
Chelsea, Mich.
Post Office Box 384
List your property with Miller—
fast, efficient service.

**REAL ESTATE
FOR SALE**

BUILDING LOT — One mile east on Old US-12, 135 feet of frontage. 1 1/4 acres. \$4000.

10 ACRE LOTS—Several to choose from. 2 1/2 miles out. From \$7,500 up.

SPOTLESS—2 bedrooms, separate dining room, 1 1/2-car garage. Aluminum siding. Ideal for a couple. \$22,000.

BRICK COLONIAL—A home with everything, 4 bedrooms, central air conditioning, sauna, large screened porch, scenic view, etc. Washington St. address.

INVEST FOR THE FUTURE—7 1/2 acres. Has village water, electric and gas. 745 ft. of R.R. frontage. 3-bedroom home to provide current income. \$80,000 with terms.

**CLARENCE WOOD
BROKER**

648 Flanders St.
Phone 475-8217 or 479-4603

WANTED — Mature middle-aged lady to maintain home for retired professional man. Work includes light housekeeping and some cooking 5 days a week. Must live in. References required. NO 2-7089.

**Men Needed To Train
As Semi Drivers**

Train now to drive semi tractor trailers, local and over the road. You can earn high wages after short training. For application, call 419-243-4053, or write Safety Dept., United Systems, Inc., c/o Duff Terminal Bldg., 215 City Park Avenue, Toledo, Ohio 43602. Training will be on the actual equipment. 12

WANTED

Boys and girls, 7-12 years old, for the 1970-71 Bowling Season at Chelsea Lanes.

Call
Chelsea Lanes,
475-8141
and come 9:00 a.m.
Saturday, Sept. 12

Listen to that "all's-well" purr

Your car's engine will "purr" with contentment after our experts change the oil and give it a good lubrication.

Sweet music to your ears is the purr of your engine, sure promise of pep, power and performance after our servicemen drain the sludge and fill the crankcase of your car with highest quality PURE oil.

PURE OIL PRODUCTS

JIM'S PURE SERVICE

Tires — Batteries — Tune-Ups — Brake Service — Wheel Alignment
PHONE 475-2822 501 SOUTH MAIN

WANT ADS

ATTENTION: Morality erects buildings all winter if you are in need of a commercial or agricultural building order before winter and want to save money. Quality materials and workmanship guaranteed. Call Petersburg 279-1855 collect or write to Box 84, Petersburg, Mich. for all your pole building needs see Morality Pole Builders today.

FOR RENT—Nearly new 3-bedroom year-around Lake Front cottage. Walkout tiled basement, garage. Sugar Loaf Lake, 1/2 block from Waterloo Rd. \$150 per month. Ph. 479-7034.

TRAILERS FOR SALE — Ideal summer or year around home on Clear Lake. Ready to move in. Ask for Pat Cook, 1500 Clear Lake Rd. Ph. 475-8770.

SLAX

Ladies and Girls

Hundreds of new
Fall and Winter
Styles

**DANCER'S
MAIN FLOOR**

FOR SALE — Electric stove, and electric iron. Call after 4:30 p.m. GR 9-7201.

LOST—Child's glasses, vicinity of Pierce Park. Phone Hershel O'Dell, 125 E. Summit, 475-2667.

**REAL ESTATE
FOR SALE**

65 ACRES on M-52.
55 ACRES, 2 miles east on black-top.

Kern Real Estate

616 S. Main St., Chelsea
Phone 475-8563.

WANTED

Boys and girls, 7-12 years old, for the 1970-71 Bowling Season at Chelsea Lanes.

Call
Chelsea Lanes,
475-8141
and come 9:00 a.m.
Saturday, Sept. 12

**CREDIT
PROBLEM?
NO PROBLEM!**

CONTACT
MR. SMALL
CREDIT ADVISOR
at
**HENDERSON
FORD**

662-3261
Ann Arbor

WANT ADS

PIANO TUNING, Chelsea and area. Facilities for reconditioning and rebuilding. Used piano sales; reconditioned grands and verticals. E. Elkune. 426-4425.

**For Low Cost
Floor Covering**

We have small and large pieces, ends of rolls, etc., of linoleum and carpeting at close-out prices. Many sizes and colors to select from.

MERKEL BROS.

**"Towne Place" Carpet
By Lees**

\$2.00 less than ever before!
The cost is just
\$8.95 per sq. yd.
Regularly \$10.95

You must come in and see this carpet for yourself in order to appreciate the rich, plush texture and sparkling colors. Both plain and multi-color. You must feel it to see how deep and dense the pile really is. It is a very good value at this price.

Sale ends Saturday, Sept. 26.

**MERKEL
Furniture & Carpets**

Open Mon. and Fri. Until 9 p.m.

Call Chelsea 475-8621 — We'll bring samples of "Towne Place" carpet to your home.

MOTHERS — Babysitting in my home, pre-school or half-day kindergarten. Transportation provided. Good home. 475-4792.

APT. WANTED, 1st floor, for single woman. Phone 475-4523.

New Low Price

Nylon tweed rubber back carpet. Use almost anywhere... a real do-it-yourself carpet. Six sparkling colors. \$4.59 sq. yd. Regularly \$5.95.

**MERKEL
Furniture & Carpets**

Sale Ends Sat., Sept. 26
Open Mon. and Fri. Until 9 p.m.
Phone Chelsea 475-8621

**CHELSEA AREA
HOMES**

UNIQUE — Beautiful year-round home, 5 years old, Lake-front and also private canal. Fireplace, family room, 3 bedrooms, balcony. Located 20 minutes from Ann Arbor on South Lake. Chelsea schools. Priced to sell. Terms possible.

CHELSEA — Executive's ranch home. Beautiful grounds, very nice location.

CHELSEA — Remodeled 2-bedroom home located close to downtown. Nice screened porch, dining room, large kitchen. \$21,500. Terms possible.

LARGE FAMILY HOME — 6 bedrooms, recreation room, fireplace, 3 baths, large yard. Near schools.

LARGE OLD HOME — Excellent condition on approximately 1 acre in the village of Chelsea. 10 rooms. Terms possible.

QUALITY BUILT — 3-bedroom ranch, excellent location. 2 fireplaces, 2-car attached garage, 2 1/2 baths, swimming pool. Priced below assessed value.

**Eibler, Frisinger
& St. Amour
REALTORS**

Dexter 426-4659 Chelsea 475-8681

Evenings Call
Paul Frisinger, 475-2621
George Frisinger, 479-4161
Herman Koenn, 475-2613
Bob Thornton, 475-8857
Burke Fitzgerald, 1-878-6803

WANTED

Boys and girls, 7-12 years old, for the 1970-71 Bowling Season at Chelsea Lanes.

Call
Chelsea Lanes,
475-8141
and come 9:00 a.m.
Saturday, Sept. 12

—SPECIALS—

1-LB. PKG. BOOTH
Ocean Perch Fillets . . 49c

KEYKO
Margarine . . . 3 lbs. 79c

1 GAL. PLASTIC JUG
Sealtest Milk . . . 89c

ECKRICH
Smok-y-Links . . . lb. 69c

FRESH
Ground Beef . . 3 lbs. \$1.79

MICHIGAN
Potatoes . . 10-lb. bag 49c

Also, Leon's Delicatessen Foods
SCHNEIDER'S
MEATS - GROCERIES
PHONE 475-7600 121 S. MAIN ST.

WANT ADS

**Formal Wear
RENTAL SERVICE**

Prom - Weddings - Special Events
6 different colors.

Foster's Men's Wear

ATTENTION Working mothers—Will care for your children in my licensed home while you work. Mrs. Judy Boyer, 475-8055.

K. OF C. CHICKEN BAR-B-Q Sunday, Sept. 13 at Stop & Shop lot, M-52. \$1.50.

WILL BABY-SIT in my home in downtown Chelsea. Call 475-2659.

KITCHEN HELP WANTED — Apply in person. 119 S. Main, Chelsea Restaurant.

Notice

Sprague Buick - Olds - Opel has opened up a \$395 car lot. This is located behind our building. We have about 8 cars to start with. No car on this lot will be priced above \$395.

**Sprague
Buick-Olds-Opel, Inc.**

1500 S. Main St., Chelsea
Evening 475-8271 or 475-8240
Phone 475-8664

Open evenings by appointment.

WANTED TO RENT by middle-aged couple, home within 25-minute radius of Ann Arbor. Would prefer a newer home, located out of village or city limits. Phone Mr. Gaunt 763-2345 days, 764-0156 evenings during week.

FOR SALE — Poodle puppies. Call 475-8784.

CHELSEA ART CENTER offering 6-week painting class sessions, day and evening classes, starting Sept. 21. Call Mrs. Maxwell, 971-7066, or Mrs. Frisinger, 479-4161.

GARAGE SPACE—for rent. Call 475-2659.

BABYSITTING done in my own home. Phone 475-7078.

HOUSE FOR SALE—3 bedroom, on acre near Unadilla. New drain field, 3-car garage. Call 498-2697 after 6 p.m. or on week-ends.

WILL BABY-SIT in my own home, preferably 3- or 4-year-olds. Ph. 475-7101.

FOR SALE — 1000 bottle Coke machine, very good condition, \$60. Also, deluxe model Morris Brothers horse trailer, like new, \$950. Ph. 428-9452, after 5 p.m. 12

BARGAINS

1/3 - 1/2
and more off.

**DANCER'S
BARGAIN FLOOR**

PONTIAC

The last of the '70's must go. Shop now for a good selection.

**Harper Pontiac
Sales & Service**

CHELSEA
Phone 475-5311 or 475-5451 days,
761-2999 evenings.
Open evenings by appointment.

STEADY JOB in local retail business. For good pay we only ask for a friendly, dependable person, lady preferred, who can work with customers and keep merchandise displayed attractively. Reply Box SE-10, care of Chelsea Standard, Chelsea, Mich.

Southside Realty

Call (517) 522-8469, (313) 475-8424
or (517) 522-8435.

G. G. HOPPER,

Building Contractors
Phone GR 5-5581
Gregory 498-2148

FOR RENT — 2 apts., one first floor, one second floor. Unfurnished. For married couples only. No children, no pets. Call 475-8469 after 5 p.m.

**"BOWL"
In Shirts**

From Strieter's

**MEN'S - WOMEN'S
FAST DELIVERY**

Strieter's Men's Wear

121 Main St.
Chelsea, Mich.

WANTED

Boys and girls, 7-12 years old, for the 1970-71 Bowling Season at Chelsea Lanes.

Call
Chelsea Lanes,
475-8141
and come 9:00 a.m.
Saturday, Sept. 12

WANT ADS

VACUUM CLEANERS — Electro-lux, authorized sales and service. James Cox, Manchester. Ph. 428-2931 or 428-8221. 43tf

CUSTOM BUILDING
and
REMODELING

Chelsea Associated
Builders, Inc.
Phone 475-8182 38tf

THE LITTLE
FLOWER SHOP

Weddings, funerals, arrangements.
Flowers for all occasions.

Mildred Fish

3451 Waltrous Rd.
Phone 475-8608

FREE REMOVAL DONE — Also
buyers of standing timber and
walnut trees. Chelsea 475-7631. 34tf

XEROX COPIES made. First 20
at 20 cents each. Over 20, special
prices. Merkel Brothers. 26tf

ROBERT PATRICK for home im-
provement, building and main-
tenance. Ph. 475-7480. 45tf

CLOGGED
SEWERReynolds Sewer
Service

We Clean Sewers Without Digging
Drains Cleaned Electrically.
FREE ESTIMATES
2-YEAR GUARANTEE
Phone Ann Arbor NO 2-5277

"Sewer Cleaning Is Our Business —
Not a Side Line" 38tf

WANTED — About 80 acres of bare
land or farm. Chelsea-Manchester
area. Write Box 513, care of Chel-
sea Standard, 300 N. Main St.,
Chelsea. 13

COOK WANTED to work in frater-
nity-like setting. Full time.
Write Box 621, Ann Arbor. x12

FREE KITTENS, phone 475-8066. 12

WANT ADS

SEE US for transit, mixed con-
crete, Klump Bros. Gravel Co.
Phone Chelsea 475-2580, 4920 Love-
land Rd., Grass Lake, Mich. x40tf

GARAGE SALE — Fri., Sept. 11,
from 10 a.m. to 4 p.m. Lots of
antiques, baby and children's cloth-
ing, bathinette and stroller, mat-
ernity clothes, 4 modern chairs, ex-
panding play pen, bottles and misc.
household items. 160 E. Summit
St., Chelsea. x12

WORK SHOE
HEADQUARTERS

Famous Red Wing Brand
\$12.95 to \$26.95

Foster's Men's Wear 34tf

SIDING SPECIALIST — since 1938
Alcos aluminum siding, Remod-
eling. Finest workmanship. Esti-
mates. William Davis. Ph. (313)
663-6635. x19

TOGETHERNESS IS FUN. Try
square dancing. Lessons begin
Sunday, Oct. 4, 7 to 9:30 p.m.
Stockbridge Town Hall, \$1.50 per
couple per lesson. Sponsored by
Stockbridge Square. 15

FOR RENT — Winterized, lake-
front cottage, approximately 20
miles from Chelsea. Full bath, Irish
Hills area. 668-7883 evenings. 12

TOMATOES, corn, beans and other
vegetables. Steve Toth, Sr. 2100
McKernan Dr., phone 475-7989. x12

Brilliant New
Admiral Quality TV

Color or black and white, con-
soles and portables, with automatic
fine tuning. 3-year warranty on
picture tube. 1-year free service.

Complete antenna, sales and in-
stallation. Service on all brands
TV, radios, stereos.

Porter's TV

212 Buchanan St.
Chelsea Phone 475-8380

FOR RENT — 3-room apt., no
children, no pets. 123 Lincoln
St. 12

FOR SALE — National 2-spool
treadle sewing machine. Call
475-8053. 12

GARAGE SALE — Friday, Sept. 11,
beginning at 9 a.m. Household
items and clothing. 6025 Sibley
Rd. 12

WANT ADS

FOR SALE — Oil heater, Kenmore,
almost new, thermostat and
blower. Heats 5 to 7 rooms. \$50.
Call week-ends, 475-8754. 12tf

REAL ESTATE

8 MILES WEST — 3-bedroom
rancher in delightful wooded
area, with lake access to Grass
Lake nearby. Owner transferred.
\$21,000. This house qualifies for
the new low-down, low-interest
rate government financing. You
may be eligible, call us.

10 MILES WEST — New 3-bedroom
rancher, fully carpeted, counter-
top stove and hood, refrigerator,
dishwasher, full basement, at-
tached garage, 180x130 lot, ex-
cellent location near Grass Lake.
Immediate occupancy. \$23,900.

A SMALL CHARMER — Located
near Norvell, with new garage.
House completely re-done inside
and outside. Lake rights. \$12,000.

120-ACRE FARM — Corner of
Waterloo-Munith and M. Hope
Rds. Buildings better than aver-
age. \$60,000.

Willis Real Estate
Ph. (517) 522-8121 12

Landscape Foreman

Year-round position for energetic,
dependable man who can take on
responsibility and share in profits.
Must have mechanical experience
working with farm type equipment
and an agricultural or horticultural
background with ability to learn
new skills. Job involves working
with and supervising 1-3 men,
planting evergreens and trees, gen-
eral nursery care, cultivating, etc.
Winter work includes snow removal
and mechanical repair in heated
shop. Good pay and attractive ben-
efits for right man. Call Mr. Fra-
leigh 663-0313. x12

MINI BIKE for sale — 2 cycle
Homelite engine, \$100. Call 475-
8750. x12

ELECTRIC FENCE — Like new.
Steel fence posts, used 2x10's.
Ph. 426-4056. x13

SHARON VALLEY Builders —
Pole type buildings, wood or steel
frames, six colors of siding. Call
(517) 822-8258 or (313) 428-8018.
Also farm and commercial build-
ing. x13

GARAGE AND YARD SALE —
Typewriter, small tape recorder,
household goods, clothing, toys,
knick-knacks, and some antiques.
221 E. Middle St., Chelsea. Call
475-7087. x12

ARC ST. BERNARD puppies, 6
weeks old, large selection. Phone
426-3520. x12

FOR SALE — 3-year-old albino
mare, bred to a Palomino. Well
broken and gentle with children.
Phone 475-2782. x12

CHILD CARE in my home. 10180
Jackson Rd. Call 475-8789. x14

HEREFORD BULL for sale. 3 1/2
years old. Also David-Bradley
manure spreader, like new. Phone
479-7901. x12

WANT ADS

GUTTER CLEANING and Repair
Work — Lowest prices, free esti-
mates. Call 662-0114. 13

REAL ESTATE

BRICK RANCH, 4-bedroom, fire-
place, two acres, garage, Dexter
school. Terms.

13 VACANT ACRES, high and
rolling, oak trees, possibility of
pond, two miles from Chelsea.

UNADILLA mobile home sites for
sale. 1/4 acres, ready to move on.
Electricity, pump, well, septic and
field. 10 minutes from Chelsea.
Terms.

Howell Town
& Country, Inc.

CARLIE WIEDMAN
Local Representative
Ph. 426-3758 12

WANTED — babysitter in my
home in Chelsea, 2 to 12 p.m.
Call 475-8740 before 2 p.m. 12tf

PIANO LESSONS — Now accepting
students to start in Sept. Call
Mrs. Lawton, 475-2426. 13

GET EXTRA INCOME and in-
teresting part-time work de-
livering furniture and driving
truck. Could be good for retiree
or someone on late shift. Call
475-8821 or see Jack. Merkel
Brothers. 12

OPPORTUNITY: The Armstrong
Traveling Installation School is
coming to Michigan to train new
men interested in the floor cov-
ering trade and to update present
ones. Interested persons contact
Jack Merkel at Merkel Brothers. 12

All Insurance Needs

In the convenience of your own
home — or mine.

N. H. Miles, Allstate

Call GR 5-8334 after 6 p.m. 45tf

HELP WANTED, female. Secretary
to do general office work. Apply
in person, Honeggers & Co., Inc.,
Larow Div. See Bill Stokes. x12

FOR SALE — Sprague & Carleton
maple hutch and fruitwood por-
table bar. 1450 Island Lake Rd.
Phone 475-7362. x12

SWEET SPANISH ONIONS for
sale. Frank Long, 10475 N. Ter-
ritorial Rd. x13

FOR SALE — 225- and 275-gallon
above ground, oil tanks, \$15 each.
Six-foot steel fence posts, like new.
75c each. Two electric fences, new
condition, \$12 each. Call 426-4056.
x13

FOR SALE — '55 Ford 1/2 ton pick-
up. V-8, good condition. \$250.
Call 475-8904, Gerald Roberts. x12

FARM LABORERS WANTED —
6771 Peckins Rd. Call 475-7342. x12

POTATOES — Quality seconds, \$1
bushel; green beans, you pick.
\$2 per bushel, Mon.-Sat.; 5557
Farnsworth Rd. 9 miles northwest
out M-52 to 15557 Farnsworth Rd.
Carl Schoonover. 12tf

WANT ADS

CHILD CARE in my home for 1
child, 2-5 years old. Madison St.
Ph. 475-2760. 12

LOT FOR SALE — Middle St. at
Grant, 100 feet frontage. Ph.
475-7688. 12tf

TUTORING and remedial teach-
ing. Elementary and high school
subjects. Call 475-7528 between 12
and 4. 13

CARD OF THANKS

I wish to express my sincere
thanks to the members of Zion
Lutheran church and the fraternal
lodges and friends who called, or
sent cards to me while I was hospi-
talized, and to Pastor Morris for
his visitations and prayers.
Martin E. Miller.

THANK YOU

I sincerely wish to say thanks
for all the kind deeds that were
done for myself, and my family,
while I was layed up from a farm
accident. To Double A Products,
for their kindness, Pastor John
Morris, for his comforting prayers,
the Lutheran Brotherhood of Zion,
for their gift, and to the many
friends, relatives, and neighbors
who sent cards, and food, and were
so generous. I extend grateful
thanks. Most especially, I thank
the kind people who willingly came
in and put up our hay. It shall
be remembered always.
Elmer Haab.

THANK YOU

My sincere thanks to friends,
relatives, and the "guy and gals"
in Dancer's Store for remembering
me with cards, flowers and visits,
while I was in the hospital, and
since my return home.
Virginia Rowe.

THANK YOU

Thanks to all my friends and
relatives for their calls and gifts.
Also for the flowers I received.
And for the Rev. Dickins' calls at
the hospital and at home. It was
appreciated more than I can say.
Minnie Lesser.

THANK YOU

My sincere thanks to friends,
relatives, and the "guy and gals"
in Dancer's Store for remembering
me with cards, flowers and visits,
while I was in the hospital, and
since my return home.
Virginia Rowe.

THANK YOU

Thanks to all my friends and
relatives for their calls and gifts.
Also for the flowers I received.
And for the Rev. Dickins' calls at
the hospital and at home. It was
appreciated more than I can say.
Minnie Lesser.

THANK YOU

My sincere thanks to friends,
relatives, and the "guy and gals"
in Dancer's Store for remembering
me with cards, flowers and visits,
while I was in the hospital, and
since my return home.
Virginia Rowe.

THANK YOU

Thanks to all my friends and
relatives for their calls and gifts.
Also for the flowers I received.
And for the Rev. Dickins' calls at
the hospital and at home. It was
appreciated more than I can say.
Minnie Lesser.

THANK YOU

My sincere thanks to friends,
relatives, and the "guy and gals"
in Dancer's Store for remembering
me with cards, flowers and visits,
while I was in the hospital, and
since my return home.
Virginia Rowe.

THANK YOU

Thanks to all my friends and
relatives for their calls and gifts.
Also for the flowers I received.
And for the Rev. Dickins' calls at
the hospital and at home. It was
appreciated more than I can say.
Minnie Lesser.

THANK YOU

My sincere thanks to friends,
relatives, and the "guy and gals"
in Dancer's Store for remembering
me with cards, flowers and visits,
while I was in the hospital, and
since my return home.
Virginia Rowe.

THANK YOU

Thanks to all my friends and
relatives for their calls and gifts.
Also for the flowers I received.
And for the Rev. Dickins' calls at
the hospital and at home. It was
appreciated more than I can say.
Minnie Lesser.

THANK YOU

My sincere thanks to friends,
relatives, and the "guy and gals"
in Dancer's Store for remembering
me with cards, flowers and visits,
while I was in the hospital, and
since my return home.
Virginia Rowe.

THANK YOU

Thanks to all my friends and
relatives for their calls and gifts.
Also for the flowers I received.
And for the Rev. Dickins' calls at
the hospital and at home. It was
appreciated more than I can say.
Minnie Lesser.

THANK YOU

My sincere thanks to friends,
relatives, and the "guy and gals"
in Dancer's Store for remembering
me with cards, flowers and visits,
while I was in the hospital, and
since my return home.
Virginia Rowe.

THANK YOU

Thanks to all my friends and
relatives for their calls and gifts.
Also for the flowers I received.
And for the Rev. Dickins' calls at
the hospital and at home. It was
appreciated more than I can say.
Minnie Lesser.

THANK YOU

My sincere thanks to friends,
relatives, and the "guy and gals"
in Dancer's Store for remembering
me with cards, flowers and visits,
while I was in the hospital, and
since my return home.
Virginia Rowe.

THANK YOU

Thanks to all my friends and
relatives for their calls and gifts.
Also for the flowers I received.
And for the Rev. Dickins' calls at
the hospital and at home. It was
appreciated more than I can say.
Minnie Lesser.

THANK YOU

My sincere thanks to friends,
relatives, and the "guy and gals"
in Dancer's Store for remembering
me with cards, flowers and visits,
while I was in the hospital, and
since my return home.
Virginia Rowe.

THANK YOU

Thanks to all my friends and
relatives for their calls and gifts.
Also for the flowers I received.
And for the Rev. Dickins' calls at
the hospital and at home. It was
appreciated more than I can say.
Minnie Lesser.

THANK YOU

My sincere thanks to friends,
relatives, and the "guy and gals"
in Dancer's Store for remembering
me with cards, flowers and visits,
while I was in the hospital, and
since my return home.
Virginia Rowe.

THANK YOU

Thanks to all my friends and
relatives for their calls and gifts.
Also for the flowers I received.
And for the Rev. Dickins' calls at
the hospital and at home. It was
appreciated more than I can say.
Minnie Lesser.

District Court Proceedings

Week of Aug. 29-Sept. 1

In the 14th District Court this
past week, Clement Arnett, Ann
Arbor, pled guilty to being disor-
derly person. He was fined \$35
fine and costs, or spend three days
in jail. He was committed to jail.
Larry C. Smith, Ann Arbor, was
influenced by alcohol. He was or-
dered to pay \$150 fine and costs,
and restitution, and spend five
days on the Saline work program.
He faces six months probation,
and must pay \$150 in attorney
fees.

George R. Jones, Fenton, pled
guilty to driving under the in-
fluence of alcohol. He was fined
\$100 fine and costs, which was
paid from his bond.

George R. Jones, Fenton, pled
guilty to failure to transfer regis-
tration plates. He paid \$20 fine
and costs.

Bradley Pinkbener, Saline, pled
guilty to following too closely. He
paid \$15 fine and costs.

Theo Robison, Saline, pled gui-
lty to impaired driving. He paid
\$100 fine and costs.

Ronald D. Bloom, Ypsilanti, pled
guilty to driving on a suspended
license, and paid \$50 fine and
costs, and 5 days on the work
program.

Doris B. Austin, Saline, pled
guilty to speeding 35 mph in a 25
mph zone. She paid \$10 fine and
costs.

Kenneth Brokaw, Saline, pled
guilty to speeding 45 mph in a 25
mph zone. He paid \$30 fine and
costs.

Lance S. Belleau, Saline, pled
guilty to speeding 40 mph in a
25 mph zone. He paid \$20 fine
and costs.

Timothy Bortles, Milan, pled
guilty to speeding 41 mph in a
25 mph zone. He paid \$22 fine and
costs.

Robert R. Collins, Inkster, pled
guilty to speeding 41 mph in a
25 mph zone. He paid \$22 fine
and costs.

Daniel J. Roy, Saline, pled gui-
lty to speeding 45 mph in a 25
mph zone. He paid \$30 fine and
costs.

Rodney Tanner, Pinckney, pled
guilty to speeding 60 mph in a
40 mph zone. He paid \$25 fine
and costs.

Billy Davenport, Ann Arbor,
faced examination for uttering and
publishing counterfeit checks. He
was bound over to Circuit court.
His bond was continued.

Jerry Bridges, Ann Arbor, was
tried for illegal use of narcotics.
Sentencing set for Sept. 23 at 10
a.m.

Thomas Burger, Detroit, was
found guilty as charged in a suit
involving a boat collision. He had
to pay restitution to Cynthia
Sam of \$97, and \$50 fine and costs,
and spend 30 days in jail, which
was suspended.

Harry Judson, 131 Dewey, Chel-
sea, appeared on a traffic warrant.
He paid \$25 fine and costs, or
spend two days in jail.

Martin J. Way pled guilty to
careless driving, and speeding. He
paid \$35 fine and costs.

Mark Kaidon, Manchester, pled
guilty to excessive noise from his
tires. He paid \$15 or spend two
days in jail.

Harry K. Niehaus, Grass Lake,
disobeyed a stop sign. He pled
guilty, and paid \$15 fine and costs.

Godfrey W. Graves, Jackson,
pled guilty to speeding 44 mph in
a 30 mph zone. He paid \$20
fine and costs.

Bruce Donald Gray, Ann Arbor,
pled guilty to careless driving. He
paid \$35 or spend four days in
jail.

Michael Wayne Miller, Milan,
pled guilty to speeding 42 mph in
a 25 mph zone. He paid \$24 fine.

Robert McCall, Detroit, pled gui-
lty to speeding 43 mph in a 25
mph zone. He paid \$26 fine and
costs.

Lawrence Asquith, Stockbridge,
pled guilty to speeding. He paid
\$28 fine and costs.

Alfred E. Smith, Dexter, was
found guilty of disobeying a stop
sign. He paid \$15.

Steven Schumaker, Whitmore
Lake, pled guilty to driving with
a suspended license. He was fined
\$75, and five days on the work
program, and 30 days probation.

Kimberly R. Labay, Saline, pled
guilty to reckless driving. He paid
\$55 fine and costs.

Grover Cleveland Rose, Manches-
ter, pled guilty to drinking liquor
on the highway. He was fined
\$45. He also pled guilty to speed-
ing. He paid \$40 fine and costs.

Gary Miles, 20735 Seig Church
Rd., was found guilty of killing a
song bird. He was sentenced to
three days of the work program
of the Conservation Dept. This
was a re-sentencing.

Abelardo Lopez, Ann Arbor, pled
guilty to impaired driving. He
paid \$100 fine and costs.

Claude Alexander, 525 N. Main,
Chelsea, pled guilty to driving un-
der the influence of alcohol. He
paid \$150 fine and costs.

George Wohland, Ann Arbor,
pled guilty to driving on a revok-
ed license. He was sentenced to
five days on the Saline work pro-
gram, \$50 fine and costs, and 30
days probation.

Randy Mauer, Ann Arbor, pled
guilty to no operator's license. He
paid \$53 fine and costs.

Roy Evans, Ypsilanti, pled gui-
lty to being drunk and disorderly.
He paid \$35 fine and costs, or
spend three days in jail.

Dale Landon, Adrian, pled gui-
lty to speeding 65 mph in a 55
mph zone. He paid \$20 fine and
costs.

Robert Allen of Hamilton, Ida.,
pled guilty to speeding 46 mph in

a 25 mph zone. He paid \$22 fine.
Cavern E. Farley, Milan, pled
guilty to speeding 55 mph in a
35 mph zone. He paid \$30.
Hoy Clifton, Wixom, Brooklyn,
was sentenced \$250 fine, and costs
for driving under the influence of
alcohol, or spend 30 days in jail.
Victor P. Debruyne, Saline, pled
guilty to speeding 54 mph in a 35
mph zone. He paid \$28 fine and
costs.
George Glendening, Morenci,
pled guilty to speeding 45 mph in
a 25 mph zone. He paid \$28 fine
and costs.
Helen Purcell, Detroit, pled gui-
lty to speeding, 45 mph in a 35
mph zone. She paid \$30 fine and
costs.

Douglas E. Brown Wins
Marine Promotion

With Unit in Vietnam

Vietnam — Marine Corporal
Douglas E. Brown, Jr., son of Mr.
and Mrs. Douglas E. Brown of
1280 Sugar Loaf Lake Rd., Chel-
sea, Mich., was promoted to his
present rank while serving with

Community Calendar



Jaycee Auxiliary meeting Tuesday, Sept. 15, 8 p.m., home of Mrs. Robert Updegraff, 14112 North Territorial Rd. Jaycee wives and guests invited. "White Elephant" sale.

Gingham Belles 4-H club members annual election meeting, Tuesday, Sept. 15, 7 p.m., home of Mrs. William E. Clark, 26 Sycamore Dr.

Esther Chapter, Congregational church, Thursday, Sept. 17, at 8 p.m. at the church. Bring bags you have made, plus school and sewing supplies to put in the bags to be used for mission work. Mrs. Clarence Vogel, and Mrs. Paul Maroney, hostesses.

Rogers Corners Farm Bureau, Friday, Sept. 11, 8:30 p.m., home of Mr. and Mrs. Luther Schaible, 4665 Fletcher Rd., Manchester.

Trap Shoot this Sunday, 10 a.m. to 1 p.m. at the Chelsea Rod and Gun Club Grounds. Breakfast served 8-10 a.m. adv 15

Rummage Sale—Salem Grove United Methodist church WSCS will hold a rummage sale Friday, Sept. 11 at Sylvan Town Hall, 9 a.m. to 4 p.m. adv 12

Spaulding for Children Auxiliary's meeting has been postponed until Monday, Sept. 21, 8 p.m., Spaulding Farm.

Singles, 25 and over, dance and mingle, every Tuesday, 9 p.m., YMCA, Ann Arbor. Live music.

Attention seniors: "71": Earn points for your senior trip! Sign up to work at one of the senior stands at the fair. Call now: 475-8028 or 475-7842.

Chelsea Co-op Nursery school still has a few openings in 3- and 4-year-old groups and several openings in the afternoon non-assist group. Call Mrs. Carl Robinson, 428-4128 for further information.

Ann Arbor Singles Club fall picnic Sept. 6 at 3 p.m. at Island Park, Ann Arbor. Pot-luck with ham and corn on the cob supplied by the club. Live music for dancing at 4 p.m. Anyone who is single, and over 25 is welcome. American Legion and Auxiliary hospital equipment available by contacting either Mr. or Mrs. Eugene Martin, at 475-5867 after 4 p.m.

First Annual Ox Roast Dinner, Saturday, Sept. 12, 3-8 p.m., Dexter American Legion Home, Dexter-Chelsea Rd. advx38

Fair Board Meeting Tuesday, Sept. 15, 8 p.m., at the Fair grounds. Everyone invited.

Band Boosters Thursday, Sept. 10, 8 p.m., high school band room.

Chelsea Art Center offering 6-week painting sessions, day and evening classes, starting Sept. 21. Call Mrs. Maxwell, 971-7066 or Mrs. Frisinger, 479-4161. adv12

The Agricultural Entrepreneurs Farm Bureau Thursday, Sept. 17 at the home of Clifford Bradbury at 8:30 p.m. Bring card table, cake, sandwiches, or Jell-O.

Chelsea Camera Club, Sylvan Township Hall, Tuesday, Sept. 15, 7:30 p.m. All interested people requested to be present at this meeting, which is called to decide and plan the future of the club.

Chelsea Community Farm Bureau at the home of Mr. and Mrs. Everette Van Riper, Thursday, Sept. 10, 8 p.m.

Jerusalem Farm Bureau Sept. 10, at 8:30 p.m., at the home of Mr. and Mrs. Walter Wolfgang. Bring cookies for refreshment.

Ann Arbor chapter of Parents without Partners dance and buffet Sept. 12, 9 p.m. to 1 a.m. at American Legion Hall, 1035 S. Main St., Ann Arbor. All parents without partners, members or prospective members, and all single parents invited to attend.

Chelsea Rebekah Lodge No. 130 at the hall on Sept. 15, at 8 p.m.

Older Adult Group of the Methodist church opening meeting for 1970-71, Saturday, Sept. 19, in the church social center. Pot-luck dinner, 12:30 p.m. Bring own table service and dish to pass. Any Methodist Home residents who wish to attend are welcome to join the group.

Chelsea Residential Area Betrament Society, Monday, Sept. 21, 8 p.m., 252 Harrison.

K. of C. Chicken Bar-B-Q Sunday, Sept. 13 at Stop & Shop lot, M-52. \$1.50. adv 12

Single? 25 or over? Eat and dance at the Corn Roast given by Tuesday Single Club, Sunday, Sept. 6, 3 p.m., Island Park Shelter.

— JOIN —

**GOVERNOR BILL MILLIKEN
& CMSR. JAY BRADBURY**

At the Republican

OX ROAST

Sunday, Sept. 13 — Delhi Park - 1 to 6 p.m.

Tickets: Ph. 662-2721 or at gate.

DEATHS

Mrs. Walter Schaible
Former Francisco Resident
Dies Sept. 1 in Grass Lake

Edna R. Schaible, 701 E. Michigan, Grass Lake, widow of the late Walter Schaible, died Tuesday morning, Sept. 1, at the Chelsea Medcenter, at the age of 75. She is survived by two daughters, Mrs. Dale (Betty Lou) Swisher, of Dowagiac, Mrs. Dwight (Joan) Bingel, Ann Arbor; seven grandchildren; two sisters; Mrs. Laura Lucking of Wayne, Mrs. Clark Burget, Detroit; and one brother, Rupert Eschbach of Grass Lake.

She was a member of St. John's United Church of Christ, Francisco, Grass Lake Chapter No. 169 OES, and the Royal Neighbors. Funeral services were held Friday, Sept. 4 from the Stormont Funeral Home, Grass Lake. Interment was at East Cemetery.

Memorial contributions may be made to St. John's United Church of Christ, Francisco.

Mrs. William Hubbert
Native of England Dies
Monday at Methodist Home

Louise Florence Hubbert, formerly of 643 W. Middle St., Chelsea, died Monday, Sept. 7, at the Chelsea Methodist Home, where she had been a resident for the past year.

Born Feb. 20, 1895, at Apley, Lincolnshire, England, daughter of William and Annie Holmes Cross, she was married to William Hubbert Jan. 26, 1912 at Greetwell, England. She came to the United States in 1913. She has been a resident of Chelsea for the past 30 years.

She was a member of the Chelsea United Methodist church. Her husband preceded her in death in 1955.

She is survived by five daughters: Mrs. Russell (Kathleen) Bernath, Chelsea, Mrs. Joseph (Grace) Penrose, Lansing, Mrs. Robert (Marion) Patrick, Lansing; Mrs. David (Jean) Aronson, Chelsea; Mrs. Mahlon (Geraldine) Dunkel, California; a brother, Leonard Cross, Chelsea; a sister, Mrs. Jessie Merillion, Holbeck, England; 10 grandchildren; four great-grandchildren; and several nieces and nephews.

Funeral services will be held today, Thursday, Sept. 10, at the Burghardt Funeral Home at 2 p.m. with the Rev. Richard Clemens officiating. Burial will be at Oak Grove Cemetery.

After, Ann Arbor. Bring a dish or just yourself.

Rod & Gun Club annual jam-boree Wednesday, Sept. 23. Tickets are available at Spaulding Chevrolet or from Ray Canine.

TOPS Club at library. Wednesday, afternoon group, 12:30 p.m. For information call 475-2592. Thursday evening group, 7 p.m. For information call 475-8720.

Inquiries regarding the Chelsea blood bank may be directed to Harold Jones at Cavanaugh Lake in the event that Mrs. Dudley Holmes is unavailable.

Sewing every Tuesday afternoon at Korner House.

Fun night every Friday night at 7:30 p.m. at Korner House.

School Board Briefs

Special school board meeting was held Tuesday night, Sept. 8, in the Board of Education room, Chelsea High School.

Present were: Storey, Powers, Smith, Hopkins, Haselschwardt, Superintendent Cameron, Business Manager Mills, Principals Lane, Conklin, and Wojcicki, and Assistant Principal Fauble.

Several guests were present. Meeting called to order at 8:15 p.m. by Treasurer Powers.

Minutes of the Aug. 31 meeting were approved as read:

Motion by Hopkins, supported by Haselschwardt, to pay general fund bills of \$4,328.04. All ayes.

Motion by Haselschwardt, supported by Smith, to adopt the agenda as amended. All ayes.

Motion by Hopkins, supported by Storey, to accept the auditor's report as presented by the firm of Ierman, Johnson & Hoffman. All ayes.

Motion by Storey, supported by Smith, to certify the 1970-71 levy for operations at 22.20 mills, 11.22 mills allocated and 10.98 mills additional voted. All ayes.

Motion by Haselschwardt, supported by Storey, to certify the 1970-71 levy for the 1966 debt retirement fund at 2.5 mills. All ayes.

Motion by Hopkins, supported by Smith, to certify the 1970-71 levy for the 1965 debt retirement fund at 3 mills. All ayes. This was the same levy as 1969-70.

Business Manager Mills reported that the trial on the Beach school boiler suit will start Monday, Sept. 14.

Principal Lane reported on the progress in hiring a vocational agriculture teacher. He is in contact with several potential candidates, but has not yet found a person to fill the position.

A discussion was held regarding the issuance of passes to athletic events to Senior Citizens, the clergy, and teachers. No official action was taken by the board.

Motion by Haselschwardt, supported by Smith, to go into executive session at 9:35 p.m. All ayes.

Meeting called back to order at 10:25 p.m.

Meeting adjourned at 10:30 p.m.

BIRTHS

A son, Steven Todd, Sunday, Aug. 30, to Mr. and Mrs. Gary Wortley, 20151 Old US-12 East.

ADOPTION

A son, Ronald William, Friday, Sept. 4 to Mr. and Mrs. Richard Boss and Bobby of Tipton, Ind., formerly of Chelsea.

The island of Martinique, West Indies, has 687 persons per square mile.

Cong. M. Esch Will Be in Town Friday Morning

Congressman Marvin Esch, Michigan's representative to Congress from the Second District, will be in the Dexter-Chelsea area Friday, Sept. 11.

In Chelsea, he will be in his "mobile office" at the Chelsea Post Office between 10:30 and 11 a.m.

In a giant sweep through his Second Congressional District, Esch will launch his swing at 7 a.m. Wednesday, Sept. 9 in Milan and wind up his schedule with an 11 a.m. office hour on Friday, Sept. 18, in Northville.

GOP Ox Roast . . .

(Continued from page one)

Advance tickets may be obtained by calling Ticket Chairman Barbara Jackson at 761-0961 or Republican Headquarters at 602-2721. Tickets will also be sold at the gate.

GOP Women Will Model Gowns Of First Ladies at Fashion Show

A fashion show, entitled "First Ladies on Parade," will be given Tuesday, Sept. 15, at 10:30 a.m. at the Statler Hilton Inn, 1-94 and S. State St., Ann Arbor. The show, which is sponsored by the Republican Women of the 2nd Congressional District, is a champagne brunch, followed by a fashion show which will feature exact replicas of the inaugural ball gowns worn by 19 First Ladies of the United States.

The gowns, which were commissioned by the Republican National Committee, were made by two Troy designers, David Zeese, and Don Nagel. They are on display for the first time in Michigan, since the idea originated here, and the gowns were made here.

The gowns have been shown in Traverse City, and will be shown in Kalamazoo, before the Sept. 15 showing in Ann Arbor.

Models for the event will be from the 2nd Congressional District. Helen Milliken, wife of the governor, will wear the Mary Todd Lincoln gown, and Mrs. Robert

Daniels and Mrs. Paul Mann, both of Chelsea, and Mrs. John L. Snyder, Dexter will model gowns in the show.

Gowns featured are those worn by Martha Washington, Louisa Adams, Abigail Adams, Dolley Madison, Sarah Polk, Angelica Van Buren, Mary Todd Lincoln, Lucretia Garfield, Helen Taft, Florence Harding, Edith Wilson, Edith Roosevelt, Lou Hoover, Grace Coolidge, Francis Cleveland, Caroline Harrison, and Abigail Folger.

Hair styling for the show will be done courtesy of three salons in Ann Arbor: Avanti, Mr. Reid's Hair Fashion, and Jacobson's.

Tickets may be purchased by calling either Olga Nickels in Ann Arbor, Mrs. Marvin Taurainen, in Chelsea, Mrs. Snyder, Dexter or Alice Lampe, Dexter. The show is a Republican fundraising event.

The land and buildings of the average United States farm are worth \$180,000.

Police 'Collect' on Warrant Issued In February, 1969

Chelsea police were able to "collect" last week on a felony warrant that had been issued in February, 1969, when they received a call from the Grand Rapids Police Department, informing them that they were holding a suspect on that warrant.

Officers Ringe and Peebles went to Grand Rapids to take custody of the man, Vernon O'Dell Dingman, who was wanted on a charge of uttering and publishing bad checks in Chelsea.

Dingman was living in Grand Rapids at the time of the arrest. He was returned to Chelsea, where he entered a demand for examination at the 14th District Court. His bond is set at \$5,000 cash.

CROWDED SPACE

More than 4,000 man-made objects, including military and civilian satellites, have orbited the earth since 1957, according to the U.S. Air Force Aerospace Defense Command.

Just in time JUMBO VALUES FOR FALL HOME REPAIRS

Specials

Thurs., Fri., Sat.,
Sept. 10-11-12

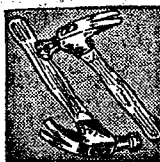
**SAVE BIG
ON THESE OUT-
STANDING BUYS
FOR FALL FIX-UP**



**WROUGHT IRON
PORCH RAILS**

48" SET OF 2

\$15.90 Reg. \$19.20
Save \$3.30



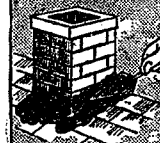
LIFETIME HAMMER
WITH FIBERGLASS HANDLE

\$6.45 Reg. \$7.29
Save 84c



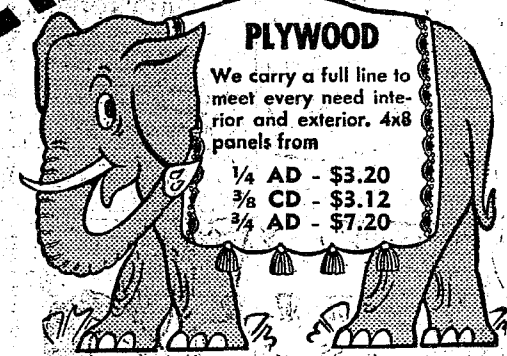
PURE GUM TURPENTINE

Qt. 69¢ Reg. 85c
Gal. \$1.98 Reg. \$2.60



ROOF PLASTIC

Gal. 88¢ / Reg. \$1.08
Save 20c



PLYWOOD

We carry a full line to meet every need interior and exterior. 4x8 panels from

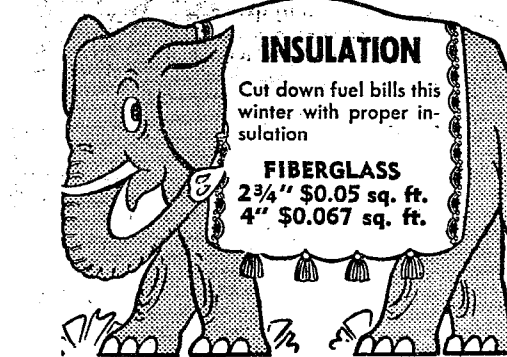
1/4" AD - \$3.20
3/8" CD - \$3.12
3/4" AD - \$7.20



PEGBOARD

Utilize wall space for storage with pegboard in kitchen, utility room, garage, etc. 4x8 panels from

1/2" - \$3.52
3/4" - \$5.28



INSULATION

Cut down fuel bills this winter with proper insulation

FIBERGLASS
2 3/4" \$0.05 sq. ft.
4" \$0.067 sq. ft.



ROOFING

Make those roof repairs while the weather's still good. Special low price on asphalt shingles in several types and colors.

\$8.75 per sq.



STORM WINDOWS

Be ready to keep those winter winds out. Get storm windows now and save at our low prices.

TRIPLE TRACK
Full Weatherstripped
\$13.95

PANELING

Wide selection of authentic wood grain patterns. Buy now and save. 4x8 panels as low as

\$3.49 4'x7' - **\$2.98**

25 DIFFERENT PANELS

ARMSTRONG CEILING TILE

Decorative acoustical ceiling tile is easy to apply—makes any ceiling beautiful.

From 11 1/2¢ sq. ft.

KENTILE FLOOR TILE

Put in a new floor at an amazingly low cost. Long life vinyl-asbestos tile only

12" x 12" 18 3/4¢ ea.

MAKE US YOUR VALUE HEADQUARTERS FOR ALL HOME NEEDS

CHELSEA LUMBER CO.

DIAL 475-3391

KEY START
**4 Season
8-HP
COMPACT TRACTOR**
With Mower, Snow Thrower, Tire Chains



DOWN GO PRICES
Reg. \$786.45
\$699
Use Our Budget Pay Plan

Mows 32" swath; blasts snow 20 feet! Electric start Briggs & Stratton engine. 3 speeds forward, reverse. Headlights.

Tractor, Mower Only \$549
**Electric Start
8-HP GARDEN TRACTOR**
Mower, Snow Blade and Tire Chains
\$599
Save \$87.45

1¢ SALE!

Buy First Gallon at Regular Price
Get Second Gallon for Only 1¢



First Gallon \$4.99 **Second Gallon Only 1¢**

Give your walls new color and beauty! Brush or roll on a smooth, rich finish that takes repeated scrubbing. Dries in just 30 minutes... cleans up with water. Gallon covers 400 square feet. White or colors. 20-4931-6

Savings in Every Department! SHOP NOW & SAVE

AGRICULTURE IN ACTION

by GARY A. KLEINHENN

Michigan Farm Bureau

★ Where People Are Nice Folks . . .

There are a lot of city people who are passing the time by talking about the benefits of living in a small town, especially this time of the year. Heading through the harvest season in a rural town is unique. To the on-looker, there's an air of awakening abounding after a quiet summer; a spirit of co-operation that to find anywhere else one would have to search far and wide.

Small towns are where the masses of people become just friendly folks; where operators of the "super-stores" become familiar names, where you can send a child to the corner market with a note and have it filled out. It's a place where one not only knows his neighbor but his neighborhood.

But in this commentary on small town America there is a point of contention. To the by-passer, a little "burg" may appear sleepy even though the area may be thriving. In rural settings business activity can be proportionally as great as in any city. The difference in a rural area is that it simply isn't as obvious. The business of farming is a year-long project developed through stages of growth that requires the full-time operation of successful farmers. That air of normalcy is a cover to the fervor of the agricultural industry.

Passers-by need to get out into the farm to see the industry. To witness it first hand is best to do right now in areas where the harvest is happening. One of the good ways is to take part in a community festival. Many offer the benefit of farm tours.

Examples are the Bavarian Festival in Frankenmuth, the Danish Festival in Greenville, the Scottish Festival in Alma, and the Posen Festival in Posen saluting the potato crop. There are many more.

Unlike a fair, which is limited to the fairgrounds, a festival emphasizes local community characteristics and takes place through an entire community.

Tours to the melon farms were a featured event at the recent Howell Melon Festival in their celebration of the harvest of their famous cantaloupe. Howell folks have a lot to be festive about. In fact, like the many festivals throughout the state, their program is a people-to-people program, rural and urban, celebrating a fruitful season with the sincerity and fun that only a small town can give. If you haven't been, watch for announcements and be sure to attend.

Some Days It Might Be Better To Stay in Bed

Would you believe, backing into a policeman's car—in front of the police station? What a nightmare! It was a waking one for John Newell, 9494 Dexter-Chelsea Rd., Tuesday, Sept. 1, at the Chelsea Police Station.

Newell, who had taken his car to the station for inspection, backed into a patrol car in front of the station, as he was leaving, causing extensive damage to the vehicle.

He was not ticketed for the incident, but it was written on the report that he was at fault.



If something happens to your Mobile Home you'll be protected with
Auto-Owners Mobile Home Insurance
See Your A-O Man

A. D. MAYER AGENCY, INC.

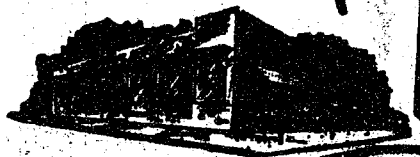
"Your Protection Is Our Business"
115 Park St. Chelsea
Phone 479-5061

Auto-Owners Insurance
Life - Casualty - Fire - Auto

THE SUPERMARKET THAT'S JUST A LITTLE BIT BETTER

Stop & Shop

14901 Old U.S.-12
Corner at M-52
Chelsea



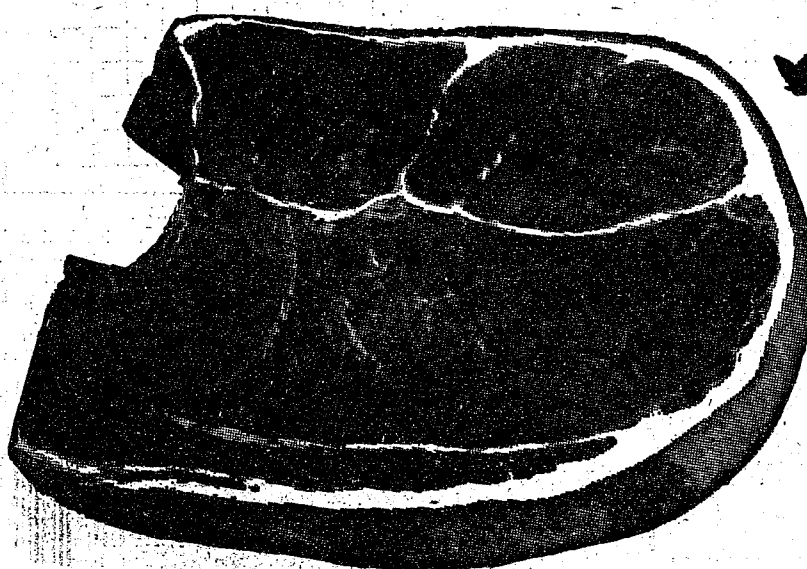
"Triple R Farms" U.S.D.A. Choice

**BONELESS
ROUND
STEAK** \$1.09 lb.

THE KNOW HOW OF INTELLIGENT MEAT BUYING IS REALLY THE 'KNOW WHERE'

Our customers have learned to depend on the outstanding quality of Stop & Shop meats — unfailing satisfaction with every cut they purchase. The finest quality, together with the expertise of our meat cutting experts, makes an unbeatable combination.

Prices effective Wednesday, September 9
through Tuesday, September 15, 1970.



"Triple R Farms" U.S.D.A. Choice

Sirloin Steak \$1.29 lb.

Stop & Shop's Fresh, Lean, All American Beef

Hamburger 3-Lb. Units or More 65¢ lb.

Tender, Delicious

Cube Steaks \$1.39 lb.

"Triple R Farms" Mich. Grade 1

Breaded Pork Cutlets 89¢ lb.

Stop & Shop's Homemade

Rib Steak 99¢ lb.

"Triple R Farms"

U.S.D.A. Choice

**CHUCK
STEAK**

79¢ lb.

Lean, Tender, Boneless & Cubed

Pork Steaks 79¢ lb.

"Triple R Farms" U.S.D.A. Choice

**Boneless Rolled Rump or
Sirloin Tip Roast** \$1.29 lb.

Lean, Tender, Meaty

Ground Round Steak 99¢ lb.

"Triple R Farms" U.S.D.A. Choice

Pork Sausage 69¢ lb.

"Triple R Farms" U.S.D.A. Choice

Skinless Wieners 59¢ lb.

Domino Pure Granulated

SUGAR

5-Lb.
Bag

39¢

Blue Ribbon

Golden Margarine

In 1/4-Lb.
Prints

5 for \$1

Holsum's Hot Dog or

Hamburger Buns

Package
of 8

25¢

Campbell's Rich

Tomato Soup

10 3/4-Oz.
Can

10¢

Mrs. Owens' Old Fashioned

Strawberry Preserves

20-Oz.
Jar

49¢

Meadowdale

Peanut Butter

3-Lb.
Jar

88¢

Family
Size

Sanitary Napkins

Modess

48 Count
Box

89¢

Farm Fresh Produce

Golden Ripe

Bananas 10¢ lb.

U.S. No. 1 Michigan

Prune Plums 15¢ lb.

COLD BEER

ALL POPULAR BRANDS

PUFFS

FACIAL TISSUES

Large Size
(200's)

19¢

Kosher or Polish

Camelot Pickles

Quart
Bottle

39¢

First Quality

Panty Hose

Only

49¢

Nabisco Oreo Creme Sandwich

Cookies

15-Oz.
Pkg.

39¢

Nestle's

Quick

2-Lb.
Box

59¢

Camelot

Root Beer

1/2 Gallon
Jug

39¢

Randall's Great Northern

Eatin' Beans

4-Lb.
Jar

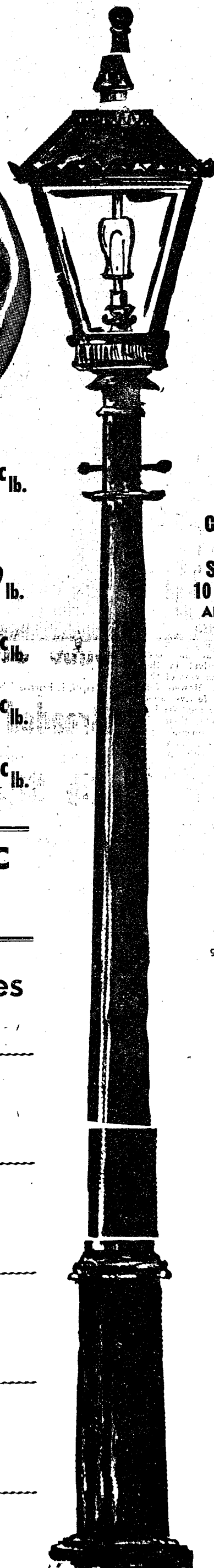
37¢

WE
RESERVE
THE
RIGHT
TO
LIMIT
QUANTITIES

For Your
Convenience
**OPEN
SUNDAY**
10 a.m. - 4 p.m.
All Sale Prices
Effective
Sundays

Sorry,
No Sales
To Dealers

STORE HOURS:
Monday, Tuesday,
Wednesday
9:30 a.m. - 6 p.m.
Thursday, Friday
9 a.m. - 9 p.m.
SATURDAY
9 a.m. to 6 p.m.
SUNDAY
10 a.m. to 4 p.m.



Legal Notices

MORTGAGE SALE
Default has been made in the conditions of a mortgage made by MARVIN RINE-SMITH and NELA J. RINE-SMITH, his wife, to Y. M. TASHIMURA, DESIGNER, Mortgages, dated July 22, 1969, and recorded on September 11, 1969, in Liber 1301, on page 467, Washtenaw County Records, Michigan, and assigned by said mortgage to THE COMMONWEALTH BANK, a Michigan corporation, dated August 12, 1969, and recorded on September 11, 1969, in Liber 1301, on page 467, Washtenaw County Records, Michigan, on which mortgage there is claimed to be due at the date hereof the sum of Two Thousand Four Hundred Twenty and no/100 Dollars (\$2,420.00), including interest at 14.18% per annum.

Under the power of sale contained in said mortgage and the statute in such case made and provided, notice is hereby given that said mortgage will be foreclosed by a sale of the mortgaged premises, or some part of them, at public venue, at the west entrance of the Washtenaw County Building, City of Ann Arbor, Washtenaw County, Michigan, at 10:00 o'clock a.m., on Friday, October 30, 1970. Said premises are situated in Whitmore, Washtenaw County, Michigan, and are described as:

Lot 280, Horseshoe Division, Shady Beach Subdivision, Northfield Township, Washtenaw County, Michigan, according to the Recorded Plat thereof, Washtenaw County Records.

The length of the period of redemption from such sale will be 6 months.

Dated: July 20, 1970.

Attorneys for Mortgagee
HOWARD J. KASPER, Attorneys
15019 West Ten Mile Road
Southfield, Michigan 48075

MORTGAGE SALE
Default has been made in the conditions of a mortgage made by ROBERT DEWEY KEUSCHER and GERALDINE J. KEUSCHER, his wife, of the Township of Ypsilanti, County of Washtenaw, State of Michigan, to AMERICAN MIDWEST MORTGAGE CORPORATION, a Michigan corporation, dated April 28, 1969, in Liber 867, on page 394, Washtenaw County Records, Michigan, and assigned by said mortgage to THE FEDERAL NATIONAL MORTGAGE ASSOCIATION, a national mortgage association, dated April 28, 1969, in Liber 867, on page 406, Washtenaw County Records, Michigan, and which said mortgage was thereafter, on to wit the 25th day of May, 1969, assigned to THE COMMONWEALTH BANK, a Michigan corporation, dated June 10, 1969, in Liber 867, on page 394, Washtenaw County Records, Michigan, on which mortgage there is claimed to be due at the date hereof the sum of Four Thousand Eight Hundred and Seventy Eight and 44/100 Dollars (\$4,878.44), including interest at four percent (4%) per annum.

Under the power of sale contained in said mortgage and the statute in such case made and provided, notice is hereby given that said mortgage will be foreclosed by a sale of the mortgaged premises, or some part of them, at public venue, at the west entrance of the City of Ann Arbor, Washtenaw County, Michigan, at 10:00 o'clock a.m., on Thursday, September 24, 1970.

Said premises are situated in Township of Ypsilanti, Washtenaw County, Michigan, and are described as:

Lot 355, South Devonshire Subdivision No. 1 of part of the South half of Section 11, Township of Ypsilanti, County of Washtenaw, State of Michigan, according to the plat thereof as recorded in Liber 17 of Plats, Page 32, Washtenaw County Records.

The length of the period of redemption from such sale will be six months.

Dated: June 25, 1970.

FIRST FEDERAL SAVINGS AND LOAN ASSOCIATION, a Michigan corporation, 10000 E. Grand Avenue, Suite 404, Detroit, Michigan 48202.

MORTGAGE SALE
Default has been made in the conditions of a mortgage made by NORTHFIELD BUILDING CORPORATION, a Michigan corporation, dated April 28, 1969, in Liber 867, on page 394, Washtenaw County Records, Michigan, and assigned by said mortgage to THE COMMONWEALTH BANK, a Michigan corporation, dated June 10, 1969, in Liber 867, on page 394, Washtenaw County Records, Michigan, on which mortgage there is claimed to be due at the date hereof the sum of Four Thousand Eight Hundred and Seventy Eight and 44/100 Dollars (\$4,878.44), including interest at four percent (4%) per annum.

Under the power of sale contained in said mortgage and the statute in such case made and provided, notice is hereby given that said mortgage will be foreclosed by a sale of the mortgaged premises, or some part of them, at public venue, at the west entrance of the County of Washtenaw, Michigan, at 10:00 o'clock a.m., on Thursday, September 24, 1970.

Said premises are situated in Township of Ypsilanti, Washtenaw County, Michigan, and are described as:

Lot 355, South Devonshire Subdivision No. 1 of part of the South half of Section 11, Township of Ypsilanti, County of Washtenaw, State of Michigan, according to the plat thereof as recorded in Liber 17 of Plats, Page 32, Washtenaw County Records.

The length of the period of redemption from such sale will be six months.

Dated: June 25, 1970.

FIRST FEDERAL SAVINGS AND LOAN ASSOCIATION, a Michigan corporation, 10000 E. Grand Avenue, Suite 404, Detroit, Michigan 48202.

MORTGAGE SALE
Default has been made in the conditions of a mortgage made by NORTHFIELD BUILDING CORPORATION, a Michigan corporation, dated April 28, 1969, in Liber 867, on page 394, Washtenaw County Records, Michigan, and assigned by said mortgage to THE COMMONWEALTH BANK, a Michigan corporation, dated June 10, 1969, in Liber 867, on page 394, Washtenaw County Records, Michigan, on which mortgage there is claimed to be due at the date hereof the sum of Four Thousand Eight Hundred and Seventy Eight and 44/100 Dollars (\$4,878.44), including interest at four percent (4%) per annum.

Under the power of sale contained in said mortgage and the statute in such case made and provided, notice is hereby given that said mortgage will be foreclosed by a sale of the mortgaged premises, or some part of them, at public venue, at the west entrance of the County of Washtenaw, Michigan, at 10:00 o'clock a.m., on Thursday, September 24, 1970.

Said premises are situated in Township of Ypsilanti, Washtenaw County, Michigan, and are described as:

Lot 355, South Devonshire Subdivision No. 1 of part of the South half of Section 11, Township of Ypsilanti, County of Washtenaw, State of Michigan, according to the plat thereof as recorded in Liber 17 of Plats, Page 32, Washtenaw County Records.

The length of the period of redemption from such sale will be six months.

Dated: June 25, 1970.

FIRST FEDERAL SAVINGS AND LOAN ASSOCIATION, a Michigan corporation, 10000 E. Grand Avenue, Suite 404, Detroit, Michigan 48202.

MORTGAGE SALE
Default has been made in the conditions of a mortgage made by NORTHFIELD BUILDING CORPORATION, a Michigan corporation, dated April 28, 1969, in Liber 867, on page 394, Washtenaw County Records, Michigan, and assigned by said mortgage to THE COMMONWEALTH BANK, a Michigan corporation, dated June 10, 1969, in Liber 867, on page 394, Washtenaw County Records, Michigan, on which mortgage there is claimed to be due at the date hereof the sum of Four Thousand Eight Hundred and Seventy Eight and 44/100 Dollars (\$4,878.44), including interest at four percent (4%) per annum.

Under the power of sale contained in said mortgage and the statute in such case made and provided, notice is hereby given that said mortgage will be foreclosed by a sale of the mortgaged premises, or some part of them, at public venue, at the west entrance of the County of Washtenaw, Michigan, at 10:00 o'clock a.m., on Thursday, September 24, 1970.

Said premises are situated in Township of Ypsilanti, Washtenaw County, Michigan, and are described as:

Lot 355, South Devonshire Subdivision No. 1 of part of the South half of Section 11, Township of Ypsilanti, County of Washtenaw, State of Michigan, according to the plat thereof as recorded in Liber 17 of Plats, Page 32, Washtenaw County Records.

The length of the period of redemption from such sale will be six months.

Dated: June 25, 1970.

FIRST FEDERAL SAVINGS AND LOAN ASSOCIATION, a Michigan corporation, 10000 E. Grand Avenue, Suite 404, Detroit, Michigan 48202.

MORTGAGE SALE
Default has been made in the conditions of a mortgage made by NORTHFIELD BUILDING CORPORATION, a Michigan corporation, dated April 28, 1969, in Liber 867, on page 394, Washtenaw County Records, Michigan, and assigned by said mortgage to THE COMMONWEALTH BANK, a Michigan corporation, dated June 10, 1969, in Liber 867, on page 394, Washtenaw County Records, Michigan, on which mortgage there is claimed to be due at the date hereof the sum of Four Thousand Eight Hundred and Seventy Eight and 44/100 Dollars (\$4,878.44), including interest at four percent (4%) per annum.

Under the power of sale contained in said mortgage and the statute in such case made and provided, notice is hereby given that said mortgage will be foreclosed by a sale of the mortgaged premises, or some part of them, at public venue, at the west entrance of the County of Washtenaw, Michigan, at 10:00 o'clock a.m., on Thursday, September 24, 1970.

Said premises are situated in Township of Ypsilanti, Washtenaw County, Michigan, and are described as:

Lot 355, South Devonshire Subdivision No. 1 of part of the South half of Section 11, Township of Ypsilanti, County of Washtenaw, State of Michigan, according to the plat thereof as recorded in Liber 17 of Plats, Page 32, Washtenaw County Records.

The length of the period of redemption from such sale will be six months.

Dated: June 25, 1970.

FIRST FEDERAL SAVINGS AND LOAN ASSOCIATION, a Michigan corporation, 10000 E. Grand Avenue, Suite 404, Detroit, Michigan 48202.

MORTGAGE SALE
Default has been made in the conditions of a mortgage made by NORTHFIELD BUILDING CORPORATION, a Michigan corporation, dated April 28, 1969, in Liber 867, on page 394, Washtenaw County Records, Michigan, and assigned by said mortgage to THE COMMONWEALTH BANK, a Michigan corporation, dated June 10, 1969, in Liber 867, on page 394, Washtenaw County Records, Michigan, on which mortgage there is claimed to be due at the date hereof the sum of Four Thousand Eight Hundred and Seventy Eight and 44/100 Dollars (\$4,878.44), including interest at four percent (4%) per annum.

Under the power of sale contained in said mortgage and the statute in such case made and provided, notice is hereby given that said mortgage will be foreclosed by a sale of the mortgaged premises, or some part of them, at public venue, at the west entrance of the County of Washtenaw, Michigan, at 10:00 o'clock a.m., on Thursday, September 24, 1970.

Said premises are situated in Township of Ypsilanti, Washtenaw County, Michigan, and are described as:

Lot 355, South Devonshire Subdivision No. 1 of part of the South half of Section 11, Township of Ypsilanti, County of Washtenaw, State of Michigan, according to the plat thereof as recorded in Liber 17 of Plats, Page 32, Washtenaw County Records.

The length of the period of redemption from such sale will be six months.

Dated: June 25, 1970.

FIRST FEDERAL SAVINGS AND LOAN ASSOCIATION, a Michigan corporation, 10000 E. Grand Avenue, Suite 404, Detroit, Michigan 48202.

MORTGAGE SALE
Default has been made in the conditions of a mortgage made by NORTHFIELD BUILDING CORPORATION, a Michigan corporation, dated April 28, 1969, in Liber 867, on page 394, Washtenaw County Records, Michigan, and assigned by said mortgage to THE COMMONWEALTH BANK, a Michigan corporation, dated June 10, 1969, in Liber 867, on page 394, Washtenaw County Records, Michigan, on which mortgage there is claimed to be due at the date hereof the sum of Four Thousand Eight Hundred and Seventy Eight and 44/100 Dollars (\$4,878.44), including interest at four percent (4%) per annum.

Under the power of sale contained in said mortgage and the statute in such case made and provided, notice is hereby given that said mortgage will be foreclosed by a sale of the mortgaged premises, or some part of them, at public venue, at the west entrance of the County of Washtenaw, Michigan, at 10:00 o'clock a.m., on Thursday, September 24, 1970.

Said premises are situated in Township of Ypsilanti, Washtenaw County, Michigan, and are described as:

Lot 355, South Devonshire Subdivision No. 1 of part of the South half of Section 11, Township of Ypsilanti, County of Washtenaw, State of Michigan, according to the plat thereof as recorded in Liber 17 of Plats, Page 32, Washtenaw County Records.

The length of the period of redemption from such sale will be six months.

Dated: June 25, 1970.

FIRST FEDERAL SAVINGS AND LOAN ASSOCIATION, a Michigan corporation, 10000 E. Grand Avenue, Suite 404, Detroit, Michigan 48202.

CROSSWORD PUZZLE

Across

- Garage
- Reason
- Agad
- Vease
- Inhumane
- Expected
- Classified
- Type of fishing
- Large worm
- Keopass
- Spasid
- Recess
- Paste
28. Region
28. Fractional
28. Washes

Down

24. Dances
25. Trail
26. Blunder
27. In stance
28. Fr.
29. Cut of meat
30. Catch, as in
31. Skid
32. Hole-in-one
33. Sheep
34. City in Ohio
35. Skid
36. Hole-in-one
37. Youth

Today's Answer

1. Garage
2. Reason
3. Agad
4. Vease
5. Inhumane
6. Expected
7. Classified
8. Type of fishing
9. Large worm
10. Keopass
11. Spasid
12. Recess
13. Paste
14. 28. Region
15. 28. Fractional
16. 28. Washes
17. Duplicating device
18. Inquire
19. 21. Away
20. 22. Mels
21. Tommie
22. The breeze
23. Sound of anguish
24. Strike (sl.)
25. Owing
26. Cavalier
27. 28. Fr.
28. (inf.)
29. 34. Whether
30. 35. Top
31. Decree
32. Danger
33. Overhead
34. 37. Italy
35. 42. Hill at
36. 43. Hit at
37. 44. Down
38. 1. Bugaboo

RUSSIA SIGNS PACT
Moscow—The Soviet Union has ratified the international treaty banning nuclear weapons from outer space. The official announcement said the treaty also provides that the moon and other celestial bodies will be used only for peaceful purposes and prohibits national territorial claims on them.

ORDER OF PUBLICATION
General
State of Michigan, Probate Court for the County of Washtenaw.
File No. 56587.
It is Ordered that on November 5, 1970, at 11:00 a.m., in the Probate Courtroom in the City of Ann Arbor, Michigan, a hearing be held at which all creditors of said deceased are required to prove their claims and serve a copy of their claims on the executor named, or some other suitable person, and for a determination of heirs.

ORDER OF PUBLICATION
General
State of Michigan, Probate Court for the County of Washtenaw.
File No. 56587.
It is Ordered that on November 5, 1970, at 11:00 a.m., in the Probate Courtroom in the City of Ann Arbor, Michigan, a hearing be held at which all creditors of said deceased are required to prove their claims and serve a copy of their claims on the executor named, or some other suitable person, and for a determination of heirs.

ORDER OF PUBLICATION
General
State of Michigan, Probate Court for the County of Washtenaw.
File No. 56587.
It is Ordered that on November 5, 1970, at 11:00 a.m., in the Probate Courtroom in the City of Ann Arbor, Michigan, a hearing be held at which all creditors of said deceased are required to prove their claims and serve a copy of their claims on the executor named, or some other suitable person, and for a determination of heirs.

ORDER OF PUBLICATION
General
State of Michigan, Probate Court for the County of Washtenaw.
File No. 56587.
It is Ordered that on November 5, 1970, at 11:00 a.m., in the Probate Courtroom in the City of Ann Arbor, Michigan, a hearing be held at which all creditors of said deceased are required to prove their claims and serve a copy of their claims on the executor named, or some other suitable person, and for a determination of heirs.

ORDER OF PUBLICATION
General
State of Michigan, Probate Court for the County of Washtenaw.
File No. 56587.
It is Ordered that on November 5, 1970, at 11:00 a.m., in the Probate Courtroom in the City of Ann Arbor, Michigan, a hearing be held at which all creditors of said deceased are required to prove their claims and serve a copy of their claims on the executor named, or some other suitable person, and for a determination of heirs.

ORDER OF PUBLICATION
General
State of Michigan, Probate Court for the County of Washtenaw.
File No. 56587.
It is Ordered that on November 5, 1970, at 11:00 a.m., in the Probate Courtroom in the City of Ann Arbor, Michigan, a hearing be held at which all creditors of said deceased are required to prove their claims and serve a copy of their claims on the executor named, or some other suitable person, and for a determination of heirs.

ORDER OF PUBLICATION
General
State of Michigan, Probate Court for the County of Washtenaw.
File No. 56587.
It is Ordered that on November 5, 1970, at 11:00 a.m., in the Probate Courtroom in the City of Ann Arbor, Michigan, a hearing be held at which all creditors of said deceased are required to prove their claims and serve a copy of their claims on the executor named, or some other suitable person, and for a determination of heirs.

ORDER OF PUBLICATION
General
State of Michigan, Probate Court for the County of Washtenaw.
File No. 56587.
It is Ordered that on November 5, 1970, at 11:00 a.m., in the Probate Courtroom in the City of Ann Arbor, Michigan, a hearing be held at which all creditors of said deceased are required to prove their claims and serve a copy of their claims on the executor named, or some other suitable person, and for a determination of heirs.

ORDER OF PUBLICATION
General
State of Michigan, Probate Court for the County of Washtenaw.
File No. 56587.
It is Ordered that on November 5, 1970, at 11:00 a.m., in the Probate Courtroom in the City of Ann Arbor, Michigan, a hearing be held at which all creditors of said deceased are required to prove their claims and serve a copy of their claims on the executor named, or some other suitable person, and for a determination of heirs.

ORDER OF PUBLICATION
General
State of Michigan, Probate Court for the County of Washtenaw.
File No. 56587.
It is Ordered that on November 5, 1970, at 11:00 a.m., in the Probate Courtroom in the City of Ann Arbor, Michigan, a hearing be held at which all creditors of said deceased are required to prove their claims and serve a copy of their claims on the executor named, or some other suitable person, and for a determination of heirs.

Church School Teachers Have Opportunity in Skills Workshop

Church school teachers and workers with youth in Chelsea will be given the benefit of a training opportunity this fall unlike any offered before.

The Christian Education Department of the Washtenaw County Council of Churches is providing a Skills Workshop to be held in the Zion Lutheran church of Ann Arbor on Saturday, Sept. 12, divided according to age groups with which people work. It is from 9 a.m. to 4 p.m., and is open to all interested persons in the county. General theme of the day, "Why and Wherefore," indicates that it will deal with methods rather than doctrine.

The workshop will begin with a panel presentation on "Philosophies of Christian Education," giving an opportunity for teachers to confront and be confronted by the fact that there are distinct, different philosophies of Christian education—at least one of which undergirds their own denominational curriculum.

A panel will discuss the various educational philosophies and reflect on each. They will do this by responding to a paper prepared by one member of the panel.

Serving on the panel will be Dr. Enrich Kiehl, Associate Professor at Concordia College; Dr. Derek H. Miller, Professor of Psychiatry at the University of Michigan; and Miss Louise Ritsma, principal of Haisley School in Ann Arbor, and chairman of Christian Education Committee at First Presbyterian church. Both panelists and audience may express their views.

At 11:15 a.m., registrants will attend sessions in their own age group interests: pre-school, lower elementary, upper elementary, junior high or senior high. Here they will have opportunity to study with a qualified resource person the characteristics and learning psychology of the age group with which they work. The leader will discuss "what children in a certain age group are like, and what they are able to learn and how they learn best."

During the noon hour conference members will enjoy a lunch served in the dining room, and a browsing time at the book display.

"Building the Lesson" will be the theme of the afternoon session beginning at 1:45 p.m. Resource leaders will lead their groups through a lesson, sharing with them their particular philosophy

For And About Teenagers

SHOULD WE WAIT OR JUST GO AHEAD AND BE MARRIED...

THE WEEK'S LETTER:

I have a sort of a problem. I like this boy very much and he likes me the same. We both are serious about each other. I am almost 19 years old and he is 17 years old. We were planning to get married around Christmas or the first of the year. But some people tell us we're too young to get married and that he is too young for me. Then I was thinking about him going into the Army pretty soon. Should we wait until his Army years are over or just go ahead and be married? Maybe if we don't get married, I might lose him and I don't want to lose him. There is not another boy I want. I love him and he loves me. What, maybe, should we do?

Our reply: If he is really in love with you, there is little chance you will "lose" him because he serves his Army time before you are married. If you do marry, and have only a short time together before he enters the Army, the period of separation will be more unwelcome and difficult. Let him get his Army responsibilities out of the way. If he is less than 20 years old and trying to support a family, he will have responsibility enough.

NOTICE OF PUBLIC HEARING

To be held on September 14, 1970 at 8:00 p.m. at the Dexter Townhall, 6880 Dexter-Pinckney Road.

1. To consider issuing a Conditional Use Permit to Mr. Jack H. VanGorder to live in a mobile home as a temporary residence at 13535 Island Lake Road until his permanent home is completed.

2. To consider issuing a Conditional Use Permit to Faith Ev. Lutheran Church to build a Church building, Fellowship Hall, School rooms, etc., on the following described property: The property lies in the East 1/2 of the Southeast 1/4 of section 14 of Dexter Township in Washtenaw County. The East line of the property is 1981 feet from the center of Dexter-Pinckney Road, when you proceed West on North Territorial from the junction of the two afore-mentioned roads. From the point 1981 feet 1981 feet West of Dexter-Pinckney Road, the property line proceeds along the center line of North Territorial Road for a distance of 320 feet; thence South for a distance of 544.5 feet; thence East on a line parallel with North Territorial Road for 320 feet; thence North for a distance of 544.5 feet, reaching the original starting point. The area of the land, according to the estimate of the surveyor, is about 3.86 acres.

DEXTER TOWNSHIP ZONING BOARD

Stanley Policht, Secretary

NOTICE of PUBLIC HEARING

A Public Hearing for a conditional use permit will be held Tuesday, Sept. 15, 1970 beginning at 8:00 p.m., at Lyndon Township Hall.

LYNDON TOWNSHIP

DORIS FUHRMANN, CLERK

PUBLIC HEARING

A public hearing will be held Thursday, Oct. 11, 1970 at 7:30 p.m. in the Chelsea Village Council Chambers to consider the rezoning of the following described land from Highway Service Business District to R-1 Single Family Residential:

Commencing at the South one-quarter corner of Section 13 Town 2 South Range 3 East Township of Sylvan and Village of Chelsea, Washtenaw County, Michigan; thence North 0° 08' 30" East of 1462.76 feet along the North-South one-quarter line of said Section 13 for a place of Beginning; thence North 67° 14' 30" West 60.02 feet; thence North 22° 45' 30" along the Centerline of Highway M-52; East 380.0 feet; thence South 67° 14' 30" East 630.47 feet; thence South 22° 45' 30" West 380.0 feet; thence North 67° 14' 30" West 570.45 feet to the Place of Beginning, being part of the South one-half of said Section 13, Sylvan Township.

CHELSEA VILLAGE PLANNING COMMISSION

DR. J. V. FISHER, Chairman

VILLAGE TAXES ARE DUE and PAYABLE

At the Office of the VILLAGE TREASURER, WALLACE WOOD
105 S. Main St., Chelsea, Mich.

DEADLINE: SATURDAY, SEPT. 19, 1970

After Sept. 19, tax is transferred to the County Treasurer for collection.

THERE WILL BE NO EXTENSION OF THIS DEADLINE DATE!

Hours: 9 a.m.-5 p.m. daily; 9 a.m.-2 p.m. Sat.

WALLACE WOOD

CHELSEA VILLAGE TREASURER

Need A Room? A Standard Want Ad Can Help!

Village of Chelsea

County of Washtenaw, Michigan

NOTICE OF ELECTION TO THE QUALIFIED ELECTORS OF THE VILLAGE OF CHELSEA:

PLEASE TAKE NOTICE that at the Special Election to be held in the Village of Chelsea, County of Washtenaw, Michigan, on

September 21, 1970

between the hours of 7:00 o'clock a.m. and 8:00 o'clock p.m., Eastern Standard Time, there will be submitted the following proposition:

General Obligation Bonding Proposition

Shall the Village of Chelsea, County of Washtenaw, Michigan, borrow the sum of not to exceed Five Hundred Thousand (\$500,000.00) Dollars and issue the general obligation bonds of the Village therefor, for the purpose of paying the cost of acquiring and constructing improvements and extensions to the sanitary sewer system for the Village of Chelsea, consisting of trunk sewers, force mains and pumping stations, together with the necessary attachments and appurtenances thereto and necessary rights-of-way therefor?

The place of election will be the Sylvan Township Hall, Chelsea, Michigan.

Only registered and qualified electors will be permitted to vote on the general obligation bonding proposition.

This Notice is given by order of the Village Council of the Village of Chelsea, County of Washtenaw, Michigan.

Richard Harvey
Village Clerk

WEDDING Invitations and Announcements

Distinctively Beautiful

A complete selection of INVITATIONS INFORMAL NOTES WEDDING ACCESSORIES Personalized WEDDING NAPKINS CAKE BOXES - BAGS BOOK MATCHES

Available at The Chelsea Standard 300 N. Main St. Phone GR 5-3581

1000
gilt foil
personal
address
labels

\$1.50

New Available at The Chelsea Standard

BOWLING NEWS

Junior House League

Standings as of Sept. 3

	W	L
Gambles	7	0
Wolverine No. 2	7	0
Chelsea Drug	5	2
The Pub	5	2
Inverness Inn	5	2
Wolverine No. 1	5	2
J & S Tool	2	5
Palmer T-Birds	2	5
Boyer Automotive	2	5
Smith's AAA Service	2	5
Jiffy Mix	0	7
8-D Sales & Service	0	7

Over 200 games: F. Barkley, 205; A. Schiller, 205; R. Erskine, 205; L. Hughes, 210; L. Christwell, 213; J. Harook, 205-202; N. Fahrner, 206; P. Maynard, 212; D. Eder, 215; B. Johnson, 234; D. Kite, 222; A. Sannes, 255; B. Beeman, 208; B. Schenk, 213.

Over 600 series: A. Sannes, 628; J. Harook, 601.

Over 500 series: F. Barkley, 525; W. Brown, 509; R. Casterline, 527; A. Schiller, 554; R. Erskine, 545; J. Hughes, 514; L. Hughes, 546; D. Buku, 508; H. Pennington, 509; B. Yocum, 550; L. Fahrner, 513; S. Hopkins, 513; N. Fahrner, 559; P. Maynard, 504; D. Eder, 588; D. Scott, 504; S. Policht, 543; B. Johnson, 587; K. McMannis, 525; R. Kite, 524; D. Kite, 553; R. Fike, 539; J. Harmon, 515; M. Smith, 501; A. Fletcher, 518; B. Beeman, 530; N. Packard, 511; B. Schenk, 572; C. Koenigster, 540; P. Boham, 533; D. Copperrill, 540; H. Burnet, 529; J. Toma, 562.

Chelsea Suburban

Standings as of Sept. 2

	W	L
Patty Ann	4	1
Dairy Queen Braizers	3	0
Chelsea Lanes	3	1
Dancer's	3	1
State Farm	3	1
Chelsea State Bank	3	1
Dana Corp.	1	3
G. A. Sales	1	3
Waterloo Garage	1	3
Arter Roll-On's	1	3
Pittsfield Plastics	1	3
Poor Mobil	0	4

425 Series and over: L. Jarvis, 454; N. Packard, 447; B. Smith, 482; D. Cozzens, 440; G. Baczynski, 467; B. Haffley, 446; W. Liebeck, 442; E. Williams, 466; G. Wilkerson, 463; A. Hocking, 427.

150 Games and over: E. Schulz, 150; H. Harrison, 158; J. Kipfmiller, 152; L. Beeman, 172; G. Wilkerson, 155-160; B. Haffley, 153-181; R. McGibney, 166; V. Stewart, 163; W. Liebeck, 174; E. Williams, 199; J. Buku, 156; A. Copperrill, 154; L. Jarvis, 161-151; N. Packard, 155-160; B. Smith, 157-176; N. Prater, 154; D. Cozzens, 171; G. Baczynski, 164-155.

Tri-City Mixed League

Standings as of Sept. 4

	W	L
Wolverine Early Birds	4	0
8-D Sales & Service	3	1
Sprague Buick & Olds	3	1
Poor Mobil	3	1
Trail Blazers	3	1
Detting & Detting	3	1
Wolverine Tall & Small	1	3
4-W's	1	3
Jeffy Mixers	1	3
Chelsea Cleaners	1	3
Odd Balls	1	3
Smith's Mobil	0	4

500 series, men: C. Detting, 504; R. Fike, 606; E. Harook, 508; G. Miller, 612; G. Miller, 590; A. Peterson, 588; D. Scott, 509; J. Stoffer, 517; B. Watkins, 502; T. Wisniewski, 558.

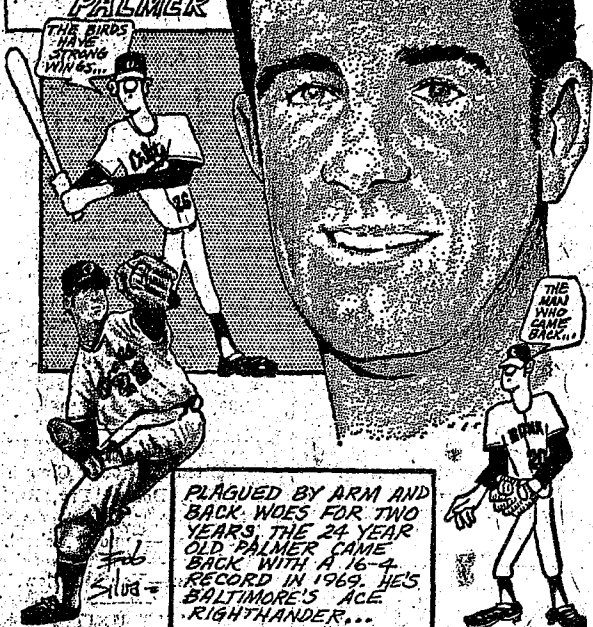
200 games, men: R. Fike, 210; 214; C. Miller, 224-213; G. Miller, 214-202; A. Peterson, 233.

450 series, women: D. Fouty, 521; N. Miller, 461; B. Parish, 496; C. Stoffer, 582; D. Worden, 450.

150 games, women: V. Allen, 157-150; E. Detting, 158; G. Detting, 158; B. Fike, 183; D. Fouty, 163-202-156; R. Harook, 180-160; B. Marsh, 158; N. Miller, 178-158.

SPORTS CORNER

THE ORIOLES HAVE BEEN DESCRIBED AS BASEBALL'S BEST BALANCED TEAM—HITTING—DEFENSE AND TOP PITCHING TALENT LIKE JIM PALMER



PLAGUED BY ARM AND BACK WOUNDS FOR TWO YEARS, THE 24-YEAR-OLD PALMER CAME BACK WITH A 16-4 RECORD IN 1969. HE'S BALTIMORE'S ACE RIGHT-HANDER...

B. Parish, 158-170-168; C. Peterson, 178; C. Stoffer, 187-169-176; D. Watkins, 190; D. Worden, 161.

Guys & Gals Mixed League

Standings as of Sept. 3

	W	L
Wolverine Tavern	4	0
Chelsea Lanes	4	0
Sandbaggers	3	1
Pub No. 2	3	1
Pub No. 1	2	2
Team No. 7	2	2
Four D's	2	2
Pleasant Lake Resort	2	2
Team No. 11	2	2
Team No. 5	1	3
Liners	0	4
Team No. 4	Absent	

Women's high game: B. Fritz, 198.

Women's high series: B. Fritz, 543.

Women's 150 or over games: C. Timmerman, 150-167; B. Fritz, 198-160-185; N. Packard, 178-156; J. Collins, 143-145-172; M. Manders, 169-164-173.

Women's 450 or over series: B. Fritz, 543; N. Packard, 457; N. Collins, 500; M. Randall, 506.

Men's high game: A. Sannes, 218.

Men's high series: A. Sannes, 597.

Men's 175 or over games: D. Fritz, 190; J. Elliott, 175-179-181; A. Sannes, 188-218-191; L. Degen, 176.

Men's 500 or over series: A. Sannes, 597; J. Elliott, 545; D. Fritz, 505.

LUXURY RESORT

Construction is underway on the Hotel Continental La Paz, in La Paz, capital of the territory comprising the southern half of Mexico's Baja California peninsula. The Mexican National Tourist Council says the hotel will have 200 rooms, which will increase by almost 50 percent the total rooms (462 in all) of southern Baja.

Fifty million babies are born in India annually.

4-H Clubs

TERRIFIC TAILORS

Terrific Tailors 4-H club met Saturday, Sept. 5, at the home of Diane Luick, 12980 Old US-12. Seven members, and one guest, Beth McCarthy, Ann Arbor, were present. Refreshments were served by the hostess.

A recreation committee was set up. Mrs. Hughes will be advisor to members Vickie Koch, Cindy Harook, Laura DeForge, and Gail Wackenhut.

The group discussed new materials for the coming year. A program was given by Cindy Harook and Mrs. Hughes on pattern layout and processing material.

The next meeting will be Oct. 3 at the home of Vickie and Tammy Downer, 13215 Dexter-Chelsea Rd. The girls are expected to have materials and patterns by next meeting.

FAMILY POT LUCK

For a tasty appetizer, stuff ham salad into icy-crisp celery. It's a crunchy combination.

Cooling weather brings on man-sized appetites. Beef or lamb stew, rich in color and flavor, are a good choice. It's the browning—long and lazy—that gives stew the rich color and flavor. Don't just heat and serve. Let it "stew" for about 20 minutes.

Shoe string potato sticks in the can are a time-saver. Place them in a shallow baking dish, dot with butter, sprinkle with garlic salt. Bake at 350 degrees F. for 5 minutes, stirring occasionally.

For a quick tuna salad, drain and flake 2 cans (7 oz. each) tuna; combine with 2 hard cooked eggs, diced, 1 cup chopped celery, 1-3 cup mayonnaise and few drops Tabasco. Arrange and garnish with chopped ripe olives. Serves four.

McINTOSH and DELICIOUS

APPLES

Bring Containers - Pick Your Own

\$2.00 per bushel
or 3 Bu. for \$5.00

BEISIEGEL ORCHARDS

2645 Peters Rd., Dexter

Phone NO 8-7563

Detroit Lions Preview Slated Tonight on TV

With established stars such as Lem Barney, Mel Farr, Alex Karras, Charley Sanders and Mike Lucci, plus Hesiman Trophy winning rookie Steve Owens, of Oklahoma, the Detroit Lions appear to have the ingredients of a National Football League championship team.

Thursday, Sept. 10, 9:30 p.m. award-winning sportscaster Don Kemer will examine the team's potential in a Channel 4 special, "The Year of the Lions."

The program will recall the beginnings of pro football in Detroit in the 1930's and track the careers of many legendary Lion heroes since that time. Last season will be reviewed as the Lions finished second to the Minnesota Vikings, NFL champions.

Head coach Joe Schmidt will point out the strengths and weaknesses of this year's Lions squad—and comment candidly on his team's chances of reaching the Super Bowl.

Exciting action film will show this year's Lions stars plying their trade in practice sessions and exhibition games.

Highlighted will be the American-dream-come-true story of Steve Owens. "The Year of the Lions" will focus on the performance of this high-priced rookie, who many scouts claimed was "too slow for the tough pro game. Yet, in pre-season play Owens has proved to be one of the Lions' most effective players."

Michigan's August Traffic Death Toll Down from 1969

Michigan traffic deaths numbered 191 in August, a reduction of 63 or about 25 percent compared with the record high of 254 set for that month last year, according to State Police traffic division provisional figures.

The August toll marked the seventh month in succession this year to show a decrease compared with corresponding months in 1969. Average for August was 220 in the five years, 1965-69. The month's low was 67 in wartime 1943.

The deaths brought Michigan's accumulated road toll for the first eight months to 1,413, which was 170 or about 10 percent fewer than 1,583 recorded in the same period last year.

Reports of delayed deaths charged to accidents in August will increase slightly the total for August and the year to date.

YES

WE ARE MAKING
LONG-TERM FARM
REAL ESTATE
LOANS

SEE US



Ann Arbor, Mich. 48103
P. O. Box 1006
Ph. 769-2411 8645 Jackson Rd.

TRAP SHOOT

Chelsea Rod & Gun Club Grounds

EVERY SUNDAY THRU OCT. 3

Shooting 9 a.m. to 1 p.m.

PUBLIC INVITED

Prizes

BREAKFAST SERVED

From 8 a.m. to 10 a.m.

IMPROVE YOUR HOME

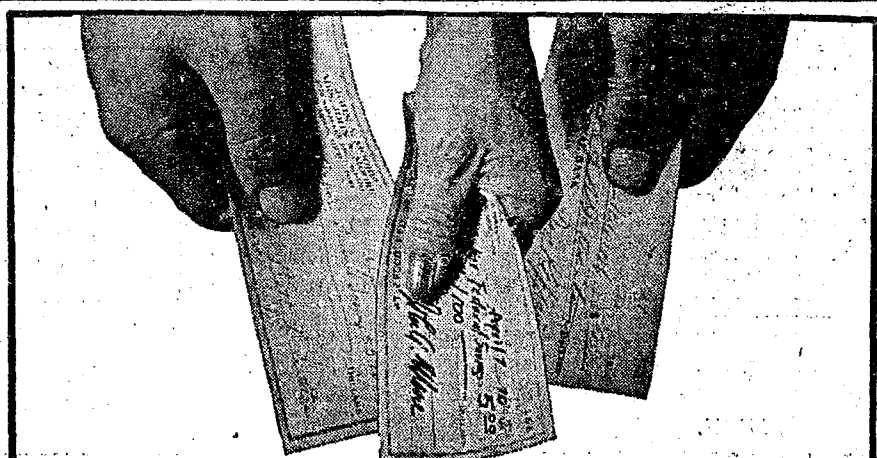
Local Company — With Service

- ★ Aluminum Siding
- ★ Roofing
- ★ Patio Covers
- ★ Enclosures
- ★ Awnings
- ★ Replacement Windows
- ★ Eaves Troughs
- ★ Storm Windows
- ★ Storm Doors
- ★ Trailer Skirting
- ★ Insulation

GEORGE
Meyer
COMPANY

3496 Pontiac Rd., Ann Arbor. Telephone 769-7330
EXTERIOR HOME IMPROVEMENTS

George Meyer — Bob Behnke



here's how \$5 a week
can buy \$30,482 plus
a monthly income of \$125

Five dollars a week. You can steal that from the food and cigarette budget. And look what it buys you. \$30,482 cash PLUS \$125 monthly income FOREVER*. That's your lifetime, your children's lifetime, and their children's lifetime. This is just one of hundreds of perpetual-money plans available at the "fed". They are all on our Perpetual Money Wheels available at any AAFS office.

*At Current Rates

All accounts insured to \$20,000 by F.S.L.I.C.

AAFS
the savings specialists

Liberty at Division, West Stadium at Payton,
Huron Parkway at Platt, Plymouth at Hudson.

ANN ARBOR FEDERAL SAVINGS

CHATTERBOX?

Slow talkers average about 450 words during a three-minute phone call, but a determined caller may squeeze more than 600 words into the same period.

SPLITTING TIME

Modern radar devices can measure time accurately up to 1-30,000 of a second.

Subscribe today to The Standard!

BOWL

for the
fun of it...



Having Fun Lately?
Bowling Is a Ball!

Put some fun in your life . . . Bowl for laughter and health at our modern, well-equipped lanes with rarely a wait. Bring the gang down!

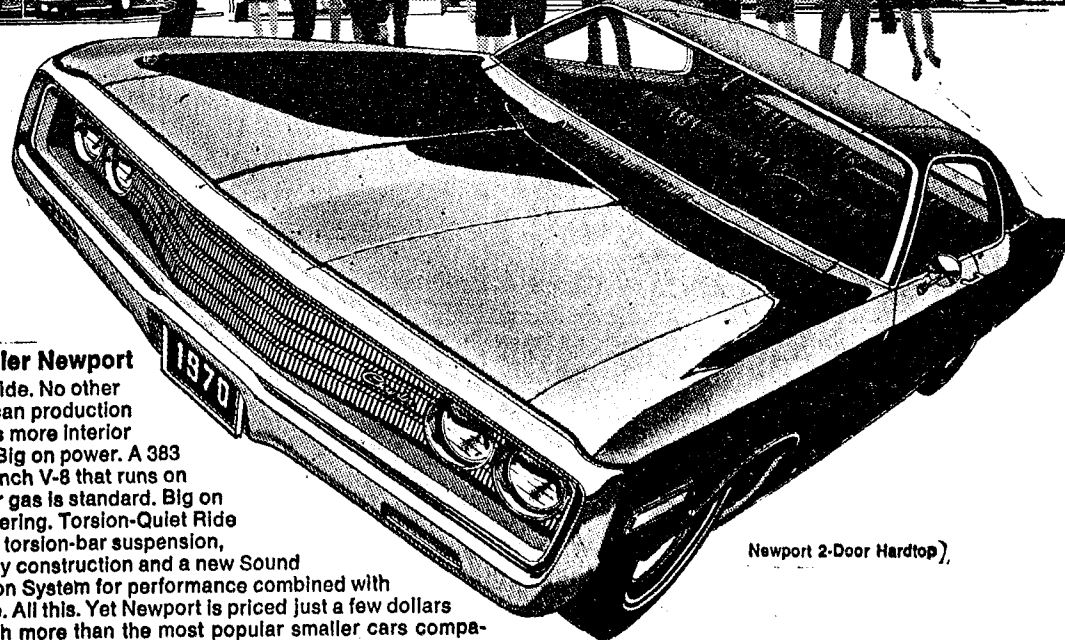
CHELSEA LANES

1180 M-52

Phone GR 5-8141

If you're looking
for the big car buys
of the year...

"See your
Chrysler
Dealin' Man"



Chrysler Newport

Big inside. No other American production car has more interior room. Big on power. A 383 cubic inch V-8 that runs on regular gas is standard. Big on engineering. Torsion-Quiet Ride blends torsion-bar suspension, unibody construction and a new Sound Isolation System for performance combined with silence. All this. Yet Newport is priced just a few dollars a month more than the most popular smaller cars comparably equipped. See your Chrysler Dealin' Man during final clearance. You'll find he can put you behind the wheel of a big, luxurious Chrysler for a lot less than you think.

Newport 2-Door Hardtop

AUTHORIZED DEALERS  CHRYSLER
MOTORS CORPORATION

BIDAA

G. A. SALES & SERVICE • 1185 Manchester Road



Grandparents Can Help Enrich Family Living for Everyone

Grandparents can make a rich contribution to family living, according to Mrs. Helen Fairman, home economist with the Co-operative Extension Service in Washtenaw, Lenawee and Monroe counties.

"The stereotype mother-in-law is overdone," she says. This person suddenly becomes a lovable grandmother with the birth of the first baby, and she answers more emergency calls than public services.

"Distances make a difference, but she appears when there is a sudden illness and she can keep the children when parents go on a planned vacation. When she lives nearby, she can answer the call for a babysitter.

"But grandmothers shouldn't always be available for babysitting. Remember, grandmother, you have a life of your own, too."

Home economists agree that both grandparents have a meaningful contribution to make. They can give an extra measure of love which can be a real tonic to a child, says Mrs. Fairman. They offer a chance for the child to "get away from it all." It can be a precious emotional change for a child to have an adult all to himself, especially when there are several young children in one family. Grandparents can tell stories of times when they were young to give children a picture of another generation in another setting.

Grandparents have time to listen, something which busy young mothers cannot always do. If a grandparent lives with the family, he or she may have a special room where the children can go and have private talks.

But grandparents must be practical and remember that the parents are responsible for their children, says Mrs. Fairman. Grandparents can help build confidence by being interested in what the parents are doing. Since they have lived through all stages of childrearing, they can help young parents over some hurdles.

"Make being a grandparent an avocation, not a career," adds Mrs. Fairman. "Don't expect your grandchildren to fill your entire life."

CHECK POCKETS
It's a good idea to check children's pockets before laundering their clothes. Some pocket items take no toll, others turn out to be culprits. Among the culprits are paper, sharp-edged objects and crayons.

Subscribe today to The Standard!

LAWN CARE

LAWN MOWING - POWER RAKING
HEDGE TRIMMING - FERTILIZING
SNOW REMOVAL
FIREPLACE WOOD - TREE REMOVAL

FOUR SEASONS LAND CARE

BRIAN FARGHER

PHONE 475-2457

POLE TYPE BUILDINGS

Wood or steel frames.
Six colors of siding.

SHARON VALLEY BUILDERS

Phone (517) 533-8258 or (313) 428-8018

DON'T GET ALL 'BURNED UP'

We are not referring in this case to losing your temper and getting angry. For that type of "burned up" can quickly pass and have no side effects. Much worse is over-exposure to the sun and the resulting "burned up" lingering pain and messy peeling of skin.

It is really simple to avoid — a good protective cream and initial exposure in small doses is all it takes even if you have sensitive skin. If you do get a severe sunburn see a physician quickly. For a moderate case a soothing analgesic spray can be effective.

YOU OR YOUR DOCTOR CAN PHONE US when you need a delivery. We will deliver promptly without extra charge. A great many people rely on us for their health needs. We welcome requests for delivery service and charge accounts.

CHELSEA DRUG

24-HOUR PRESCRIPTION SERVICE
101 N. MAIN ST. PHONE GR 5-4611

Home Economics Study Groups Calendar

Week of Sept. 9 - Sept. 16
Thursday, Sept. 10 - Geddies, Mrs. Parker, 58 N. Dixboro, Ann Arbor, 10:30 a.m.

Monday, Sept. 14 - Friendship, Mrs. Melvina Klager, 9665 Burmeister, Saline.

Tuesday, Sept. 15 - Lodi, Mrs. Jerome Dunn, 4750 S. Zeeb Rd., Ann Arbor.

Tuesday, Sept. 15 - Friendly Corners, Mrs. Helge Johanson, 1720 LeForge Rd., Ypsilanti.

Tuesday, Sept. 15 - Rogers Corners, Mrs. LeRoy Buss, 12771 Waters Rd., Chelsea. Co-hostess, Mrs. Walter Wolfgang.

Tuesday, Sept. 16 - Free-Lo's, Mrs. Arnold Wild, 7784 Austin Rd., Saline.

Tuesday, Sept. 15 - York, Mrs. George London, 11837 Carpenter Rd., Milan.

PARK PROMOTER

Poet William Cullen Bryant, after taking a walk in the countryside north of New York City in 1844, urged that a large tract of land be bought for public use while it was still inexpensive. Twelve years later, the land was purchased; it is now known as Central Park.

"There can be no doubt whatever that the peoples of the world, of whatever race or religion, derive their inspiration from one heavenly Source, and are the subjects of one God."

—Baha'i Writings

475-2718

+ Services in Our Churches +

CONGREGATIONAL CHURCH

(United Church of Christ)

The Rev. Daniel Kellin, Pastor

Sunday, Sept. 13—

10:00 a.m.—Church school re-

sume.

10:00 a.m.—Morning worship.

Sermon: "What, Sacrifice."

Tuesday, Sept. 15—

8:00 p.m.—Christian Education

Committee at church.

Wednesday, Sept. 16—

6:30 a.m.—Men's Breakfast.

ST. MARY CATHOLIC CHURCH

The Rev. F. Francis Wahowiak

Saturday, Sept. 12—

7:30 p.m.—Mass.

Sunday, Sept. 13—

Masses at 6:30 a.m., 8:00 a.m.,

10:00 a.m., and 11:30 a.m.

FIRST ASSEMBLY OF GOD CHURCH

The Rev. Thode B. Thodeson

Pastor

Sunday, Sept. 13—

9:45 a.m.—Sunday school.

11:00 a.m.—Worship service.

7:00 p.m.—Evangelistic service.

Every Wednesday—

7:00 p.m.—Midweek services.

SALEM GROVE UNITED METHODIST CHURCH

The Rev. Frederick Atkinson

Pastor

Sunday, Sept. 13—

10:00 a.m.—Sunday school.

11:00 a.m.—Worship service.

ZION LUTHERAN CHURCH

Corner of Fletcher, Waters Rds.

(Rogers Corners)

The Rev. John R. Morris, Pastor

Sunday, Sept. 13—

9:00 a.m.—Sunday school.

10:15 a.m.—Worship service.

ST. THOMAS EVANGELICAL LUTHERAN

The Rev. Daniel L. Mattson,

Pastor

Sunday, Sept. 13—

10:00 a.m.—Worship service.

11:00 a.m.—Sunday school and

bible study.

ST. JOHN'S EVANGELICAL AND REFORMED CHURCH

(United Church of Christ)

Francisco

The Rev. Robert Townley

Sunday, Sept. 13—

10:00 a.m.—Worship service.

10:20 a.m.—Sunday school.

METHODIST HOME CHAPEL

The Rev. R. L. Clemans, Chaplain

V. O. Johnson, Administrator

Sunday, Sept. 13—

8:45 a.m.—Worship service.

CHELSEA MEDICENTER

Sunday, Sept. 13—

12:30 p.m.—Sunday worship

service.

Fall Begins

On Sept. 23

Ann Arbor—Fall—and spring

for that matter—begin Sept. 23

this year. It all depends on how

and where, you look at it says

University of Michigan astronomer

Hazel Losh.

She notes that the sun will

cross the equator on its way

south of 5:59 a.m. on the 23rd.

This event is called the autumnal

equinox.

But while the crossing marks

the beginning of fall for us, it

also begins the first day of spring

for those living south of the equator.

On that day, Prof. Losh ob-

serves, the sun will be above and

below the horizon for the same

amount of time. Yet, because of

the bending effect of the atmos-

phere on sunlight, the sun can

be seen a few minutes before it

actually rises and a few minutes

after it actually sets.

This optical effect will be bal-

anced by the ever-shortening

days on Sept. 26, when both day

ST. PAUL UNITED CHURCH OF CHRIST

The Rev. Warner Siebert, Pastor

Thursday, Sept. 10—

9:00 a.m.—Koinonia Study

Group at home of Eleanor Melin-

ger.

7:30 p.m.—Association Parish

Development at Tipton Board of

Christian Education.

Saturday, Sept. 12—

Skills Workshop, Ann Arbor.

Sunday, Sept. 13—

9:15 a.m.—Church school.

10:30 a.m.—Worship. Promotion

Sunday. Sermon title: "Living in

Superlatives."

Tuesday, Sept. 15—

1:00 p.m.—Needle & Thread.

Wednesday, Sept. 16—

9:30 a.m.—Women's Fellowship

at Saline.

7:15 p.m.—High school choir.

8:15 p.m.—Chancel choir.

Thursday, Sept. 17—

7:30 p.m.—Confirmation orien-

tation.

IMMANUEL BIBLE CHURCH

145 E. Summit St.

The Rev. Frank C. Frinkle

Sunday, Sept. 13—

9:45 a.m.—Sunday school, nur-

series provided.

11:00 a.m.—Morning worship,

nursery provided.

7:00 p.m.—Evening service.

Every Wednesday—

Family hour, prayer meeting and

Bible study.

ST. JOHN'S EVANGELICAL AND REFORMED CHURCH

(United Church of Christ)

Rogers Corners

The Rev. David J. Kleis

Sunday, Sept. 13—

10:00 a.m.—Sunday school.

11:00 a.m.—Worship service.

Nursery care available during all

services.

6:00 p.m.—Junior and Senior

Baptist Youth Fellowship.

7:00 p.m.—Evening worship.

Every Wednesday—

7:30 p.m.—Bible study and

prayer meeting.

NORTH LAKE UNITED METHODIST CHURCH

The Rev. Frederick Atkinson

Pastor

Sunday, Sept. 13—

9:30 a.m.—Worship service.

10:30 a.m.—Sunday school.

BETHEL EVANGELICAL AND REFORMED CHURCH

(United Church of Christ)

Freedom Township

The Rev. Roman A. Reineck

Sunday, Sept. 13—

10:00 a.m.—Worship.

10:30 a.m.—Sunday school.

SUNDAY'S SERMON

★ Where Are They?

In the late hours of television

viewing, we see the timely remi-

nder that the hour is late and are

asked the question, "Do you know

where your children are?"

It would be difficult to deter-

mine how many times this public

service commercial has caused pa-

rents to become aware of the fact

that their children were not present

and accounted for.

And, there is the other side of

the coin. The commercial is seen

by children, viewing television at

home, who do not know where their

parents are, and, if they do

know, have no idea when their

parents will be returning home.

Regrettably, in these modern

times, the home is becoming less

and less the focal point of family

activity. Everyone, parents and

children, always seem to have

"somewhere" to go, some activity

that takes them outside the home.

Home, for many, is merely a place

to eat and sleep—a place to go

when the hour is late or the stom-

ach is empty.

Think about it for a moment.

Is your house a home? Do the oc-

cupants really "live" there? If

not, where are they?

FIRST UNITED METHODIST CHURCH

The Rev. Olive Dickens, Pastor

Thursday, Sept. 10—

9:00 a.m.—Church school (all

grades).

10:00 a.m.—Church school (nur-

series through 2nd grade).

10:00 a.m.—Worship service.

Tuesday, Sept. 15—

7:30 p.m.—Wesleyan Service

Guild at home of Miss Shirley

Smith.

Wednesday, Sept. 16—

12:30 p.m.—Phoebe Circle at the

Methodist Home.

ST. BARNABAS EPISCOPAL CHURCH

20500 Old US-12

Sunday, Sept. 13—

9:00 a.m.—Regular church serv-

Marilyn L. Hinderer, Ronald Mast Wed Saturday at Zion Church



Marilyn Lucille Hinderer, daughter of Mr. and Mrs. Norman Hinderer, 4480 M-52, Chelsea, and Ronald John Mast, son of Mr. and Mrs. Robert Mast, 5831 Mast Rd., Dexter, became man and wife, Saturday, Sept. 6, at 3 p.m. at Rogers Corners Zion church, with the Rev. John Morris officiating.

Max Ziegler, Jr., Ann Arbor, was soloist. He sang "The Lord's Prayer," and "Where'er You Walk" from Semele.

The bride's gown, designed by herself, and made by her mother, was pear de sole, covered with sheer illusion, accented with Chantilly lace, applied on sleeves, collar, and down the front. Her train also featured the same applique. Her headpiece was silk organza with a finger-tip veil. She carried yellow roses, surrounded with white chrysanthemums.

Mrs. Donald Hinderer, East Lansing, was matron of honor. Her gown featured a yellow organza top, over taffeta, with long sheer sleeves, and a skirt of olive green, belted at the empire waist. She carried a basket of yellow chrysanthemums and roses. Bridesmaids included Miss Jeanne Hinderer, cousin of the bride, from Chelsea; Miss Nancy Kennedy, cousin of the bride; Manchester, Mrs. William Kemmer, Chelsea; Miss Charlene Powers, Chelsea; Mrs. Dana Jones, sister of the bridegroom, Dexter. Their dresses were identical to that of the maid of honor. They carried baskets of yellow chrysanthemums.

Mother of the bride, Mrs. Hinderer, chose a celery green A-line dress, which featured bridesmaid buttons at the hip-line. She wore shoes and gloves to match.

The bridegroom's mother, Mrs. Mast, wore an iceberg blue A-line dress, with matching gloves, and shoes. They both wore corsages of yellow roses.

Cynthia Clark, cousin of the bride, from Grass Lake, was flower girl. She carried yellow roses. Donald Hinderer, Lansing, brother of the bride, was best man. Ushers included William Kemmer, Chelsea; Archie Bradbury, Dexter; Gerald Marshall, Dexter; Lawrence Wheeler, Dexter; and Robert Dove, Chelsea.

A reception at the Rod & Gun Club was held immediately following the ceremony. Miss Janet Mast, sister of the bridegroom, supervised the guest book. Mrs. Loren Hinderer, aunt of the bride, and Mrs. Wayne Waggoner, aunt of the bridegroom, cut the wedding cake. Mrs. Paul Herter, aunt of the bridegroom, and Mrs. Clare Wahl, aunt of the bride, poured coffee and punch. Approximately 250 guests were present.

Following a 10-day trip in the mid-western states, the young newlyweds will reside at 4676 M-52, Chelsea.

For her going away dress, the bride chose a brown knit dress with a long floral scarf, and matching accessories.

The new Mrs. Mast attended Michigan State University, and presently works at Ramco Chevrolet, Inc. in Ann Arbor.

The bridegroom attended Michigan State University, and Washington Community College, and is now employed by Huron Farm Supply in Dexter.

Red Cross Starting Classes in Baby Care, Home Care of Sick

Mrs. Ella Smith, chairman of American Red Cross, has announced two Red Cross classes that will begin this week.

Starting Thursday, Sept. 10, a class in home care of the sick and injured, will meet. The class will run from 1 to 3 p.m., or 7 to 9 p.m. The class will meet once a week until Oct. 22.

Mother and baby care classes begin Wednesday, Sept. 9, from 7 to 9 p.m. only. It is for both fathers and mothers. It will meet once a week until Oct. 28.

There will be no charge for either class. Interested parties may sign up by calling Red Cross at 971-5800.

All classes will be held at the Red Cross Operations center, 2729 Packard Rd., Ann Arbor.

Shiela Fish, Gerald Zeller Repeat Vows

Shiela Joan Fish, daughter of Mr. and Mrs. Lewis Fish, 3451 Waltrous Rd., and Gerald Kent Zeller, son of Mr. and Mrs. Robert L. Zeller, 3995 N. Troy, Rd., Troy, O., repeated their marriage vows Saturday afternoon, Sept. 6, at the Faith Community church, in Manchester, the Rev. Danburg officiating.

The bride chose a white empire style gown with chapel train. Venise lace encircled the bodice and sleeves, and organza lace covered the skirt of the dress. The skirt was edged with satin. Her headpiece had venise lace and see pearls on it, and she carried white carnations, and yellow sweetheart roses.

May Fish, sister of the bride, was maid of honor. Her gown was light blue lace, with an empire waist. She carried white carnations, with yellow sweetheart roses. All the floral arrangements were done by Mrs. Lewis Fish, mother of the bride.

For her daughter's wedding, Mrs. Fish was attired in a forest green knit dress with black trim. She chose black accessories.

Mrs. Zeller, mother of the bridegroom, was dressed in light blue. Her dress was trimmed in white, and she wore black accessories.

Karl R. David, Ann Arbor, was best man. Mike Weber, and James Fish, brother of the bride were ushers.

A reception was held in the basement of the church following the ceremony. Ruth Fish, sister of the bride, served punch and coffee. Mrs. Linda Geer, cut and served the cake, while Gloria Fish, sister of the bride, was in charge of the guest book.

The young married couple will be at home at 227 Washington St., Manchester.

The bride is a 1968 graduate of Chelsea High school. The bridegroom graduated from Miami East High school, Casstown, O., and served in the United States Air Force.



ENGAGED: Mr. and Mrs. Raymond Buckingham, 760 N. Main St., announce the engagement of their daughter, Nancy Catherine, to Ronald G. Cuthbert, son of Mr. and Mrs. George Cuthbert, Monroe. Nancy graduated in 1968 from Chelsea High school, and attended Cleary College, graduating from there in 1969. She is employed by University Hospital, Ann Arbor. Ronald Cuthbert graduated from Catholic Central High school in 1968, and joined the Air Force in 1969. He is presently stationed at McGuire Air Force Base in New Jersey. A Nov. 14 wedding is planned.

Linda Merkel Becomes Bride of C. Montgomery

Linda Merkel, daughter of Mr. and Mrs. George Merkel, 142 Van Buren, Chelsea, and Charles Montgomery, son of Mr. and Mrs. Hade Montgomery, Ellsworth Rd., Chelsea, were united in marriage, Sunday, Aug. 30, at 2 p.m. at the home of the bride's uncle, Mr. and Mrs. Donald Heller, Manchester. The Rev. R. D. Parnell officiated at the small ceremony.

Deborah Schaeffer, was maid of honor while Ron Wengren was best man.

A dinner was held following the ceremony for the immediate family and close friends.

The bride and the bridegroom are both graduates of Chelsea High school. The bride is employed at Stop & Shop in Chelsea, and the bridegroom is employed at Malloy Lithographers in Ann Arbor. The newlyweds are living at Clear Lake.

WHAT WE WEAR
One out of every 20 persons in the U.S. wears a uniform on the job. According to the best available estimate, this represents a total of about 10 million persons.



Mrs. John Terry Aimone

Catherine A. Taylor, John Aimone Speak Vows in Ann Arbor Church

Miss Catherine Anne Taylor, daughter of Mr. and Mrs. Robert K. Taylor, Chelsea, and John Terry Aimone, son of Mr. and Mrs. Francis K. Aimone, Toronto, were married Saturday, Sept. 6, at 3:30 p.m. in St. Andrew's Episcopal church, Ann Arbor. The Rev. John E. Lee, of St. Mary's-in-the-Hills in Lake Orion performed the ceremony.

The bride, given in marriage by her father, wore an ivory satin gown, fashioned with an empire waist of Venetian lace, which capped the full organza sleeves. An organza chapel-length train fell from a bow at the waist. She wore a veil of silk illusion, edged in lace, and carried a round bouquet of gardenias and ivy.

Mrs. William Marsh, sister of the bride, attended her sister as matron of honor. She wore a floor-length gown of moss green linen, accented with lace, and a wide soft-brimmed hat, that matched the bride's.

Bridesmaids, Miss "Constance" Taylor, sister of the bride, and Miss Veronica Aimone, sister of the bridegroom, were dressed in matching dresses to that of the matron of honor's in sky blue linen. Miss Caroline Taylor, sister of the bride, was junior bridesmaid. Her dress was also styled in the same manner in ecru moiré with green and blue cut embroidery. All of the women carried round bouquets of heather, Queen Anne's lace, and cornflowers.

Best man for the ceremony was Peter Aimone, brother of the bridegroom. Ushers included Patrick and Michael Wright, both of Ottawa, and William Marsh, brother-in-law of the bride.

Mother of the bride, Mrs. Taylor, wore a lavender dress of lace and satin. Mrs. Aimone, mother of the bridegroom, chose a pink printed silk ensemble, with matching accessories.

A reception was held after the ceremony at the Ann Arbor Women's City Club. Miss Cynthia

Vogel-Knopsnider Vows Spoken At Livonia Candlelight Ceremony

Martha Lynn Vogel, daughter of Mr. and Mrs. Lewis P. Vogel, Golfview Dr., Livonia, formerly of Chelsea, and Stuart Jay Knopsnider, son of Warren Knopsnider, Detroit, and Mrs. Robert Knopsnider, Livonia, repeated their marriage vows at a candlelight ceremony at Ward United Presbyterian church in Livonia, Saturday, Aug. 22.

Dr. B. L. Hess officiated at the double ring ceremony.

Given in marriage by her father, the bride wore a floor-length gown of white organza with a cameo-neckline, short puffed sleeves, and a high-bowed waist. The entire gown was accented with rows of Val-lace. Her shoulder-length veil was held in place with flowers to match her colonial bouquet of daisies, carnations, roses, and baby breath.

Miss Linda A. Vogel, Livonia, sister of the bride, served as maid of honor. Bridesmaids were Marilyn Kempiski, Grand Rapids, and Sue Pender, Livonia. Their gowns were pink, lavender, and yellow dotted swiss, with high waist and short puffed sleeves. They carried mixed colonial bouquets of daisies, roses, carnations, and wore flowers in their hair.

Gretchen L. Vogel, proceeded her sister down the aisle as flower girl, dressed identical to others in the party in blue dotted swiss. She carried a small colonial bouquet and had flowers in her hair. For her daughter's wedding, Mrs. Vogel chose a coat dress of aqua linen with lace collar. She wore matching accessories and an orchid corsage.

The bridegroom's mother was attired in a yellow A-line dress with matching lace coat. Matching accessories, and an orchid corsage completed her costume.

Engagement Told For Janet Hafner.

Mr. and Mrs. Donald G. Hafner, Chandler St., announce the engagement of their daughter, Janet Louise, to John Norris, son of Mrs. Leva Norris.

Miss Hafner is a graduate of Chelsea High school. She is employed by Tina's Beauty Shop.

Norris attended Chelsea High school and is employed by Norris Electric Service in Ann Arbor. An October wedding is planned.



Mrs. Stuart Jay Knopsnider

A woman shops better when she shops alone. Research shows that two women shopping together will each increase their average purchase value. A husband and wife team are even bigger spenders.

THE STYLE SHOP

207½ S. Main St.

OPEN

Tues. thru Sat.

Call 475-8400

For Appointments

Open Wed. & Thurs. Evenings

Judy Patrick

Pansy Kuhl - Rosemary Klink



TIPS

for your

TOP

from



TODDY and FRAN

If summer sun has done to your hair what it did to a lot of other women's, you're beginning to feel "out of it." You want a fall style that looks "in," looks like you, not the model in the magazine, or if the model looks like you want yourself to look, that's different. Bring in a description and if our helpful operators feel you'll look your finest in that hairdo, they'll give it to you. If they think you'd be happier, for your face shape, perhaps, or your hairline, in a variation of what you want, they'll talk it over with you. We think you'll be happier after your visit.

Magic Mirror Beauty Salon
Phone 665-0816
5585 Jackson Rd., Ann Arbor

CHICKEN

BAR-B-Q

SUNDAY, SEPT. 13

Serving from 12 p.m. to 3 p.m.

at Stop & Shop Parking Lot

Corner South Main and Old US-12, Chelsea

\$1.50

— Sponsored By —

CHELSEA KNIGHTS OF COLUMBUS

Make it for keeps
with
KeepsakeENCHANTED
\$275
ALSO TO 2100Your engagement
ring will symbolize
your love forever. To
make it perfectly, per-
sonally yours choose
Keepsake, the ring with a
perfect center diamond.REGISTERED
Keepsake
DIAMOND RINGSWINANS
JEWELRY

CHARM BEAUTY SALON

4396 CLEAR LAKE ROAD
(Formerly of Grass Lake)Two Operators - Hair Styling and Wig Service
Open on Mondays. Closed Tuesdays.

PHONE 475-2700

"Towne Place" carpets by LEES

\$2.00 LESS THAN EVER BEFORE

"Towne Place" carpet has been manufactured for practicality. It won't crush or show pile disturbances as easily as most plush carpets... this is because of the random cut and loop pile and the natural tendency of the fibers to spring back to their original form. Everyday care will keep the appearance fresh; and talk about wear, this carpet will give you a good long run for your money.

You must come in and see this carpet for yourself in order to appreciate the rich, plush texture and sparkling colors. Both plain and multi-color. You must feel it to see how deep and dense the pile really is. It is a very good value at this price.

SALE ENDS SATURDAY, SEPT. 26

THE COST IS JUST

\$8.95

Per Square Yard

REGULARLY \$10.95

MERKEL FURNITURE & CARPET

CALL 475-8621 -- We'll bring samples of "Towne Place" Carpet to your home.

Board Issues Guidelines for School Buses

Fred Mills, business manager for the Chelsea schools, issued the following statement, last week re-following statement last week re-school children, while riding the buses.

The statement, called the "Pupil Transportation Policy," was adopted by the Chelsea School District Board of Education at their last meeting. It includes bus etiquette and safety rules for school children.

"The transportation of pupils is a matter which involves many factors, but the 'safety' of all pupils is more important than any other factor. The drivers of our buses have attended safety meetings in the state and are fully informed about safe procedures and regulations in connection with bus transportation. They are extremely anxious to avoid accidents and to make the service satisfactory for all concerned. The drivers have an important part to play in the program but equally important is that of the pupils riding on the buses. Each pupil should be interested in the safety of himself and of the other members of the groups and

the complete co-operation of all is necessary. The following list of items is given so that all may understand the problems and the procedures to be followed in the buses:

"Pupils must obey bus drivers promptly as they are in full charge of buses and while in transit, transfer, loading or unloading. Students who do not respond to the bus driver's requests will lose their rights to ride the bus."

"Pupils should be on time at the designated bus stops. Buses cannot wait."

"Pupils should stay off the roadway at all times while waiting for buses."

"Pupils should cross in front of a bus when crossing a highway, not in back of a bus."

"They should wait until the bus has come to a stop before attempting to enter or leave the bus."

"They should keep their hands and heads inside the bus at all times."

"There should be no moving around or changing of seats on buses."

"There should be no loud talk-

ing, but conversation or singing in normal tones is permissible.

"Any student causing trouble by teasing, pulling hair, scuffling, or using unfit language will be warned, and on a second offense suspended from riding."

"Throwing articles of any kind in a bus is more dangerous than anything else, and it will not be tolerated."

"Any damage to a bus should be reported to the driver at once."

"Any student disfiguring or mutilating a bus will be required to pay for the damage, and will be denied further use of buses."

"Pupils should help keep buses clean, sanitary and orderly."

"Pupils may have to walk as far as one-half to one mile to bus stops, if necessary."

"Students will not be allowed to eat on the buses."

"Pupils are expected to co-operate with monitors."

"Complete quietness must be observed in the bus when approaching a railroad crossing."

"Any student living in the Chelsea School District is entitled to transportation without charge to and from school if: 1) He lives outside the village limits, and he is physically unable to walk to school. 2) Traffic and road conditions have been declared unusually hazardous."

"Stations and bus routes will be established by the superintendent of schools and the bus manager with reference to road conditions, student convenience, safety and economy of operation. Stations and routes are subject to change as conditions warrant, due notice being given."

"Drivers have authority to discharge from the bus only at home or at school, any student or students who do not co-operate and behave as ladies and gentlemen."

"In the event that the buses do not run because of snow, ice, etc., the announcement will be made over radio stations WJR, WOIA, and WPAG."

"Drivers have authority to discharge from the bus only at home or at school, any student or students who do not co-operate and behave as ladies and gentlemen."

"In the event that the buses do not run because of snow, ice, etc., the announcement will be made over radio stations WJR, WOIA, and WPAG."

"Drivers have authority to discharge from the bus only at home or at school, any student or students who do not co-operate and behave as ladies and gentlemen."

"In the event that the buses do not run because of snow, ice, etc., the announcement will be made over radio stations WJR, WOIA, and WPAG."

"Drivers have authority to discharge from the bus only at home or at school, any student or students who do not co-operate and behave as ladies and gentlemen."

"In the event that the buses do not run because of snow, ice, etc., the announcement will be made over radio stations WJR, WOIA, and WPAG."

"Drivers have authority to discharge from the bus only at home or at school, any student or students who do not co-operate and behave as ladies and gentlemen."

"In the event that the buses do not run because of snow, ice, etc., the announcement will be made over radio stations WJR, WOIA, and WPAG."

"Drivers have authority to discharge from the bus only at home or at school, any student or students who do not co-operate and behave as ladies and gentlemen."

"In the event that the buses do not run because of snow, ice, etc., the announcement will be made over radio stations WJR, WOIA, and WPAG."

"Drivers have authority to discharge from the bus only at home or at school, any student or students who do not co-operate and behave as ladies and gentlemen."

"In the event that the buses do not run because of snow, ice, etc., the announcement will be made over radio stations WJR, WOIA, and WPAG."

"Drivers have authority to discharge from the bus only at home or at school, any student or students who do not co-operate and behave as ladies and gentlemen."

"In the event that the buses do not run because of snow, ice, etc., the announcement will be made over radio stations WJR, WOIA, and WPAG."

"Drivers have authority to discharge from the bus only at home or at school, any student or students who do not co-operate and behave as ladies and gentlemen."

"In the event that the buses do not run because of snow, ice, etc., the announcement will be made over radio stations WJR, WOIA, and WPAG."

"Drivers have authority to discharge from the bus only at home or at school, any student or students who do not co-operate and behave as ladies and gentlemen."

"In the event that the buses do not run because of snow, ice, etc., the announcement will be made over radio stations WJR, WOIA, and WPAG."

"Drivers have authority to discharge from the bus only at home or at school, any student or students who do not co-operate and behave as ladies and gentlemen."

"In the event that the buses do not run because of snow, ice, etc., the announcement will be made over radio stations WJR, WOIA, and WPAG."

"Drivers have authority to discharge from the bus only at home or at school, any student or students who do not co-operate and behave as ladies and gentlemen."

"In the event that the buses do not run because of snow, ice, etc., the announcement will be made over radio stations WJR, WOIA, and WPAG."

"Drivers have authority to discharge from the bus only at home or at school, any student or students who do not co-operate and behave as ladies and gentlemen."

"In the event that the buses do not run because of snow, ice, etc., the announcement will be made over radio stations WJR, WOIA, and WPAG."

"Drivers have authority to discharge from the bus only at home or at school, any student or students who do not co-operate and behave as ladies and gentlemen."

"In the event that the buses do not run because of snow, ice, etc., the announcement will be made over radio stations WJR, WOIA, and WPAG."

"Drivers have authority to discharge from the bus only at home or at school, any student or students who do not co-operate and behave as ladies and gentlemen."

"In the event that the buses do not run because of snow, ice, etc., the announcement will be made over radio stations WJR, WOIA, and WPAG."

"Drivers have authority to discharge from the bus only at home or at school, any student or students who do not co-operate and behave as ladies and gentlemen."

"In the event that the buses do not run because of snow, ice, etc., the announcement will be made over radio stations WJR, WOIA, and WPAG."

"Drivers have authority to discharge from the bus only at home or at school, any student or students who do not co-operate and behave as ladies and gentlemen."

"In the event that the buses do not run because of snow, ice, etc., the announcement will be made over radio stations WJR, WOIA, and WPAG."

"Drivers have authority to discharge from the bus only at home or at school, any student or students who do not co-operate and behave as ladies and gentlemen."

"In the event that the buses do not run because of snow, ice, etc., the announcement will be made over radio stations WJR, WOIA, and WPAG."

"Drivers have authority to discharge from the bus only at home or at school, any student or students who do not co-operate and behave as ladies and gentlemen."

"In the event that the buses do not run because of snow, ice, etc., the announcement will be made over radio stations WJR, WOIA, and WPAG."

"Drivers have authority to discharge from the bus only at home or at school, any student or students who do not co-operate and behave as ladies and gentlemen."

"In the event that the buses do not run because of snow, ice, etc., the announcement will be made over radio stations WJR, WOIA, and WPAG."

"Drivers have authority to discharge from the bus only at home or at school, any student or students who do not co-operate and behave as ladies and gentlemen."

"In the event that the buses do not run because of snow, ice, etc., the announcement will be made over radio stations WJR, WOIA, and WPAG."

District Court Proceedings

Week of Sept. 1-8

In the 14th District Court this past week Frank Blackwell, Manchester, was found guilty of speeding 55 mph in a 45 mph zone. He paid \$25 fine and costs.

Thomas Robert Rang, Onsted, pled guilty to speeding 50 mph in a 45 mph zone. He paid \$28 fine and costs.

George Hawley, Manchester, pled guilty to driving on the left side of the road. He paid \$15 fine and costs.

Jimmie Thornton, Detroit, pled guilty to parking on the median. He paid \$25 fine and costs.

Barney C. Kurawicki, Tecumseh, pled guilty to speeding 45 mph in a 25 mph zone. He paid \$30 fine and costs.

Mary Hagar, Adrian, pled guilty to speeding 65 mph in a 55 mph zone. She paid \$20 fine and costs.

Bardley Finkbeiner, Saline, pled \$5 fine and costs on a case involving unnecessary noise from his vehicle. Case was dismissed if the defendant has the situation repaired.

Wayne C. Inman, Saline, pled guilty to speeding 42 mph in a 25 mph zone. He paid \$24 fine and costs.

Gary Lee Frey, pled guilty to larceny less than \$100. Court was adjourned for two weeks to await sentencing. He is free on a personal recognizance bond.

Ronald Richards, Milan, faced examination for possession of marijuana. He will appear Oct. 2, before Circuit Court. \$250 bond continues.

Dennis Salow, Ann Arbor, pled guilty to being drunk and disorderly. He paid \$50 fine and costs.

James Johnson pled guilty to driving on a revoked license. He must spend five days on the work program with Mr. Klump, and face 30 days probation. He also paid \$50 fine and costs.

Joey Ralph Mull, Dexter, pled guilty to squeezing Mrs. He paid \$15 fine and costs.

Harry Taylor, Ypsilanti, pled guilty to failing to yield right-of-way. He paid \$15 fine and costs.

Earl M. Thomas, Dexter, pled guilty to no registration. He paid \$15 fine and costs.

Jackie D. Noble, Whitmore Lake, pled guilty to speeding 40 mph in a 25 mph zone. He paid \$20 fine and costs.

Norman Honeck, Ann Arbor, pled guilty to careless driving. He paid \$35 fine and costs.

Keith D. Burton, Whitmore Lake, pled guilty to speeding 45 mph in a 35 mph zone. He paid \$20 fine and costs.

Betty L. Kempf, Tecumseh, pled guilty to speeding 40 mph in a 25 mph zone. She paid \$20 fine and costs.

Richard Roost, Tecumseh, pled guilty to speeding 40 mph in a 25 mph zone. He paid \$20 fine and costs.

Donald Spraul, Tipton, pled guilty to having no operator's license. He paid \$10 fine and costs.

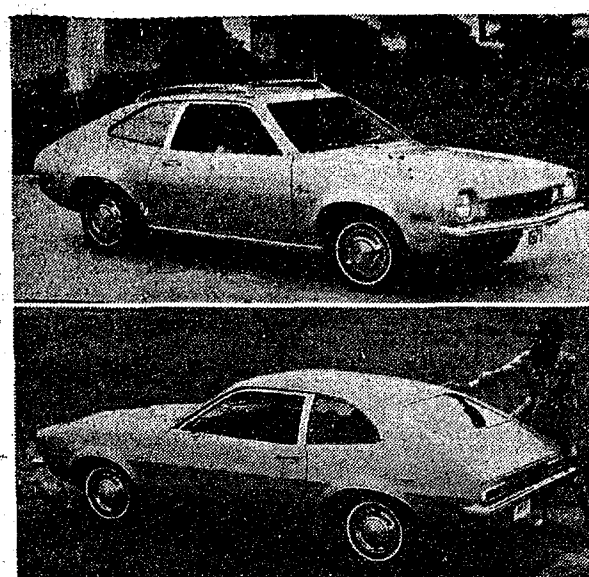
Lawrence W. Sturgill, Ypsilanti, pled guilty to speeding 47 mph in a 25 mph zone. He paid \$35 fine and costs.

Allen R. Sampier, Ann Arbor, pled guilty to improper backing. He paid \$15 fine and costs.

Bernard E. Groves, Hamburg, pled guilty to speeding. He paid \$20 fine and costs.

David Sadler, Milford, pled guilty to speeding 48 mph in a 25 mph zone. He paid \$36 fine and costs.

Richard Pecha, Pinckney, and Michael Bassett, Chelsea, pled guilty to entering Sugar Loaf Camp after 10 p.m. closing, to remove camp. They were both



FORD'S NEW 1971 PINTO, a two-door sedan, combines a small-car feel with a sporty-car look. The sloping windshield is accented by the low, sleek lines of the hood and fenders. Ventless side windows add to the trim lines of the car. In the rear, Pinto's short deck and fastback lines stress the contemporary look of the Seventies. The Pinto is about 13 1/2 feet long, turns in a circle of only 31 feet for easy maneuverability and delivers more than 25 miles per gallon in city-suburban driving. It will be on display in Ford dealer showrooms beginning Sept. 11.

Ford's New Subcompact Pinto Will Be Shown Friday, Sept. 11

Palmer Motor Sales is headquarters in Chelsea for the 1971 line of Ford Division cars and trucks, including the new subcompact Pinto and restyled Ford and Mustang lines.

Pinto will be on display at Palmer's beginning Friday, Sept. 11. The remainder of 1971 cars and trucks will debut the following Friday, Sept. 18.

"The action in 1971 is bound to be in the small car arena, and our little Pinto is going to be right in the thick of the donnybrook," said John Naughton, Ford vice-president and Ford Division general manager.

Pinto sports the flair and style of its stablemates—Mustang and Maverick—while targeting in directly on the size and economy characteristics of the leading imported cars.

Smallest of the domestic subcompacts, Pinto is four inches longer, eight inches wider and seven inches lower than the leading import. Ford Division's spacious "mini" car also offers more interior room, including five inches more rear seat-knee room and six inches more front seat-shoulder room.

This two-door sedan is powered by a front-mounted, 75-horsepower 1600-cubic centimeter (97.6 cubic inch) engine. The optional power plant is a 2000-cc (122 cubic inch) overhead cam engine rated at 100 horsepower.

Standard features include a floor-mounted, four-speed, fully-synchronized transmission; sports-car-type rack and pinion steering; bucket seats; and 15 colors ranging from Pinto Gold to Model T black.

David Dirlam, son of Mr. and Mrs. Robert Dirlam, North Lake, will begin teaching this week at Dexter Middle School.

David is a graduate of Plymouth High School, and a 1970 Central Michigan University graduate. He has a bachelor of science degree in secondary education, with a history major, and a physical education minor.

He did his student teaching last winter at Ludington.

David will be teaching 7th and 8th grade history, and also coaching the Dexter High Junior Varsity football team.

COOK'S FAVORITES
Leading the list of items for which shopper would not accept a substitute when her favorite brand was out of stock, according to a recent study, were instant coffee, salad and cooking oils, tuna and cake mixes.

finest \$25 each, or face two days in jail.

Harold Galbraith pled guilty to crossing the median on a limited access highway. He paid \$15 fine and costs. He also pled guilty to having an expired operator's license. He paid \$15 fine and costs.

Richard Pecha, Pinckney, and Michael Bassett, Chelsea, pled guilty to entering Sugar Loaf Camp after 10 p.m. closing, to remove camp. They were both

finest \$25 each, or face two days in jail.

Harold Galbraith pled guilty to crossing the median on a limited access highway. He paid \$15 fine and costs. He also pled guilty to having an expired operator's license. He paid \$15 fine and costs.

Richard Pecha, Pinckney, and Michael Bassett, Chelsea, pled guilty to entering Sugar Loaf Camp after 10 p.m. closing, to remove camp. They were both

finest \$25 each, or face two days in jail.

Harold Galbraith pled guilty to crossing the median on a limited access highway. He paid \$15 fine and costs. He also pled guilty to having an expired operator's license. He paid \$15 fine and costs.

Richard Pecha, Pinckney, and Michael Bassett, Chelsea, pled guilty to entering Sugar Loaf Camp after 10 p.m. closing, to remove camp. They were both

finest \$25 each, or face two days in jail.

Harold Galbraith pled guilty to crossing the median on a limited access highway. He paid \$15 fine and costs. He also pled guilty to having an expired operator's license. He paid \$15 fine and costs.

Richard Pecha, Pinckney, and Michael Bassett, Chelsea, pled guilty to entering Sugar Loaf Camp after 10 p.m. closing, to remove camp. They were both

finest \$25 each, or face two days in jail.

Harold Galbraith pled guilty to crossing the median on a limited access highway. He paid \$15 fine and costs. He also pled guilty to having an expired operator's license. He paid \$15 fine and costs.

Richard Pecha, Pinckney, and Michael Bassett, Chelsea, pled guilty to entering Sugar Loaf Camp after 10 p.m. closing, to remove camp. They were both

finest \$25 each, or face two days in jail.

Harold Galbraith pled guilty to crossing the median on a limited access highway. He paid \$15 fine and costs. He also pled guilty to having an expired operator's license. He paid \$15 fine and costs.

Richard Pecha, Pinckney, and Michael Bassett, Chelsea, pled guilty to entering Sugar Loaf Camp after 10 p.m. closing, to remove camp. They were both

finest \$25 each, or face two days in jail.

Harold Galbraith pled guilty to crossing the median on a limited access highway. He paid \$15 fine and costs. He also pled guilty to having an expired operator's license. He paid \$15 fine and costs.

Richard Pecha, Pinckney, and Michael Bassett, Chelsea, pled guilty to entering Sugar Loaf Camp after 10 p.m. closing, to remove camp. They were both

finest \$25 each, or face two days in jail.

Harold Galbraith pled guilty to crossing the median on a limited access highway. He paid \$15 fine and costs. He also pled guilty to having an expired operator's license. He paid \$15 fine and costs.

Richard Pecha, Pinckney, and Michael Bassett, Chelsea, pled guilty to entering Sugar Loaf Camp after 10 p.m. closing, to remove camp. They were both

finest \$25 each, or face two days in jail.

WANTED
CEMENT & BLOCKWORK
All types—Poured walls, floors, drives and foundations.
CECIL CAUDILL
(517) 851-3840

As the Season comes to an end
L & R DRIVE-IN
will be happy to serve you
Thursday thru Sunday
each week thru September.
Open 12 Noon to 9 p.m.
ROOT BEER BY THE GALLON
ALSO: SANDWICH & FOUNTAIN MENU
L & R DRIVE-IN
North Territorial and Dexter Townhall Rd.
PHONE 426-8668

Carpeting SALE
Discontinued patterns, ends of rolls, small pieces for closets and small rooms, hall runners, etc.

10' x 14 1/2" Green Tweed Nylon, rubber back.	Reg. price, \$111.20. SALE	\$71.84
12' x 16 1/2" Green Tweed Nylon, rubber back.	Reg. price, \$150.60. SALE	\$97.30
12' x 24" Charcoal Brown Commercial, wool.	Reg. price, \$15.95 sq. yd. SALE, per sq. yd.	\$6.95
12' x 18" Blue Green Nylon Tweed.	Reg. price, \$6.95 sq. yd. SALE, per sq. yd.	\$4.49
12' x 15 1/2" Red Viking Acrylic.	Reg. price, \$191.20. SALE	\$99.00
11' x 12" Green Nylon Acrylic.	Reg. price, \$140.00. SALE	\$85.00
11 1/2' x 15' Green Nylon texture.	Reg. price, \$92.40. SALE	\$69.98
12' x 15 1/2" Heavy Wool Candy Stripe, commercial.	Reg. price, \$13.95 sq. yd. SALE, per sq. yd.	\$6.98
12' x 9 3/4" Lees Beige Nylon.	Reg. price, \$71.40. SALE	\$35.00
9' x 15 1/2" Dark Blue commercial.	Reg. price, \$207.00. SALE	\$107.70
12' x 16 1/2" Light Beige Nylon Tweed.	Reg. price, \$178.90. SALE	\$99.00
7 1/2' x 8 1/2" Yellow Shag.	Reg. price, \$64.12. SALE	\$31.95
12' x 10' Wool Candy Stripe commercial.	Reg. price, \$13.95 sq. yd. SALE, per sq. yd.	\$6.98
12' Yellow Shag, 25 lineal feet.	Reg. price, \$9.95 qd. SALE, per yd.	\$5.88
12' Green Shag. Approx. 40 sq. yd.	Reg. \$7.95 sq. yd. SALE, per sq. yd.	\$4.25
12' Green Cabin Craft Nylon Plush.	Approx. 30 sq. yd. Reg. \$4.99 sq. yd. SALE	\$2.99
12' Red Cabin Craft Nylon Tweed.	Approx. 100 sq. yd. Reg. \$4.49 sq. yd. SALE	\$2.99
12' Green Nylon Tweed. Approx. 45 sq. yd.	Reg. \$7.95 sq. yd. SALE, per sq. yd.	\$4.25
4 1/2' wide Viking Kitchen Carpet, green.	Reg. \$11.95. SALE	\$7.98
4 1/2' wide Viking Kitchen Carpet, yellow-gold.	Reg. \$11.95. SALE	\$7.98

Several Small Pieces of Carpeting
Suitable for closets, house trailers, hall runners
AT CLOSE-OUT PRICES
MERKEL BROS.
FURNITURE & CARPETS
Open Mon. & Fri. Until 9 p.m. Ph. Chelsea 475-8621

SEED WHEAT Cleaning & Treating

Starting Monday, Sept. 14, we will be cleaning and treating seed wheat.

WE HAVE CERTIFIED
GENESEE SEED WHEAT FOR SALE

BLAESS ELEVATOR CO.

Div. Honeggers & Co., Inc.

FIRST ANNUAL OX ROAST DINNER

SATURDAY, SEPT. 12

Serving 3 p.m. to 8 p.m.

DEXTER
AMERICAN LEGION
POST No. 557

SCHOOL LUNCH MENU

Monday, Sept. 14: Varsity burgers, buns, slice of cheese, buttered beans, coffee cake, fruit and milk.

Tuesday, Sept. 15: Goulash, grated cheese, buttered vegetable, corn bread and butter, dessert, and milk.

Wednesday, Sept. 16: Submarines on hot dog buns, soup and crackers, pineapple cake, and milk.

Thursday, Sept. 17: Small hamburger steak, whipped potatoes, buttered vegetables, bread and butter, peach dessert, and milk.

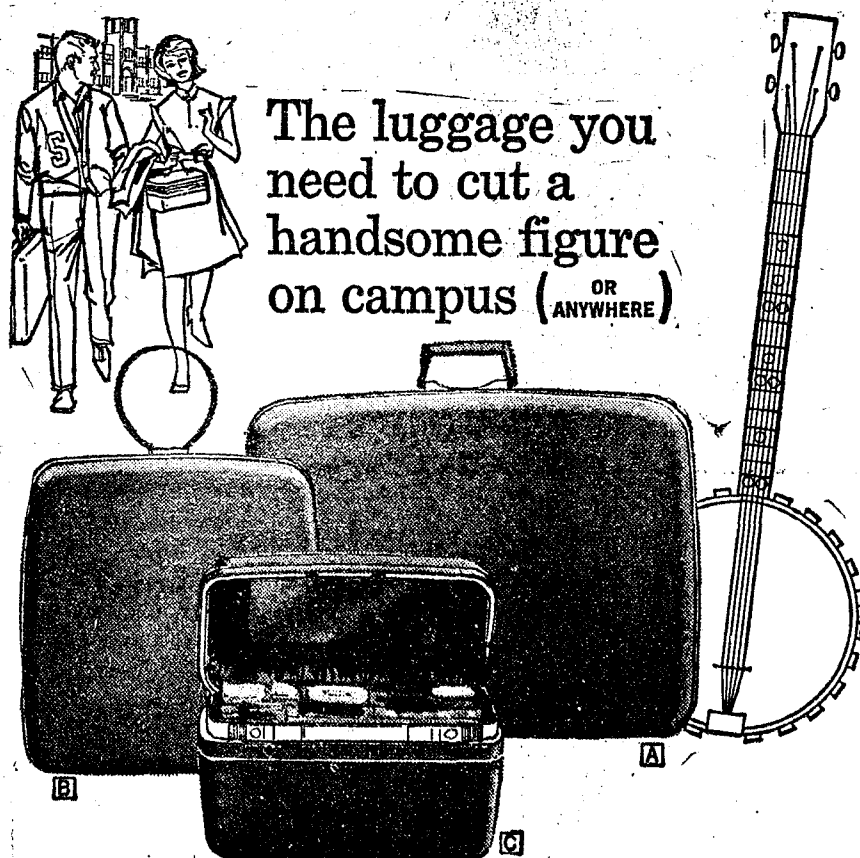
Friday, Sept. 18: Pizza pie with meat and cheese, wax beans, orange juice, mixed fruit, peanut butter cookie, and milk.

4-H Dog Club Organizing Sept. 15

The Wolves 4-H Dog Club will be starting their new year Tuesday night, Sept. 15, at 7 o'clock at the Rural Activities Center on Saline-Ann Arbor Rd.

The club is planning to include more dog areas and dog projects than last year. There are new leaders with new ideas.

Anyone interested in joining, is urged to attend on Sept. 15. Or if further information is desired, you may call Mrs. Bator, 668-8835, or Mrs. Bourn, 761-8206 before 6 p.m., or Mrs. Lynn, 663-8911, after 6.



The luggage you need to cut a handsome figure on campus (OR ANYWHERE)

Samsonite Silhouette
THE LUGGAGE THAT KNOWS ITS WAY AROUND THE WORLD
STRIETER'S MEN'S WEAR
"The Place To Go For Brands You Know"